

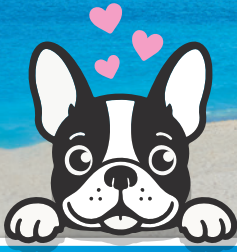


NORTH

The heavily forested lands of northern Okinawa are known collectively as “*Yanbaru*” (which translates into “mountainous areas”). A dizzying variety of trees are home to numerous types of birds, and the areas below host countless other living creatures that live in the nooks and crannies of roots as well as in the ponds and streams that feed them. Many of these creatures are members of endangered species that cannot be found anywhere else in the world. Modern-day Yanbaru also features many sights, sounds, tastes, smells and experiences that take visitors back to the days of old; it’s a place without large, bustling cities and traffic gridlock, a place that still offers crystal-clear air in abundance and a surplus of astoundingly beautiful landscapes.

EXPERIENCE KIN BLUE

U.S. Military Welcome to Join the Party
on 800m Beach, Okinawa's Longest!



Dog Friendly

The largest kite in the prefecture is a must-see!

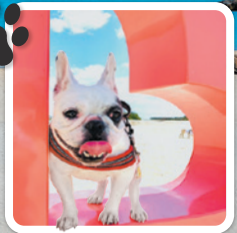


Jet skis, kayak rental, wakeboarding, tuberides, etc.



Beach Clean up

Beach volleyball



Beachside BBQ



Beach yoga, beach parties, and private party spaces

Experience the thrill of kayaking and SUP in the mangrove forest!



Kin Sunrise Beach Seaside Park

Tel: 098-968-3373
(10:00-17:30 Closed on Mondays)

Swimming season from early Apr. to end of Oct. Facilities and beach open year round.



Full amenities: Shower rooms, changing rooms, toilet, parking

KANUCHA RESORT OKINAWA

Located overlooking Oura Wan Bay near Camp Schwab Kanucha Resort covers a total of 650 acres with nine hotel buildings, beach, pools, spa and a full resort golf course. Dining and evening entertainment venues include eight restaurants, cafes, lounges and bars featuring Okinawan, Japanese, Chinese and western cuisine. Many activities are offered year-round, ranging from golf, hiking and buggy adventures during the cooler months to parasailing, snorkeling, flyboarding and even an aqua park for the kids when the weather warms. MCCS Tours+ offers special exclusive military rates to stay at Kanucha Resort, including in pet-friendly rooms. Call 646-3502 for more information about making reservations.

ASMUI

Formally known as Dai Sekirinzan—a park that offers several hiking courses with breathtaking views of Hedo Point from above, trails that wind through fascinating limestone formations estimated to be hundreds of millions of years old with sprawling banyan trees believed to contain magical powers—this peak is considered one of the most sacred spots on island. Local legends state that this peak (known locally as *Asmui*) is where the god Amamikiyo first set foot on the Earth. Since ancient times, *noro* (priestesses) from Shuri Castle journeyed to Asmui to collect sacred water for purification ceremonies in the court. This practice

stopped in 1938 due to instability followed by war. However, the practice was revived in 1999 and continues today.

HEDO POINT

Hedo Point, the northernmost point on Okinawa, is a 70+ meter-high cliff overlooking both the East China Sea and Pacific Ocean. Winds are usually strong and a refreshing sea spray often flows up the cliff.

HIJI FALLS

Hiji Falls is a must-visit for hiking enthusiasts. This area's well-crafted walking trail was created to give nature lovers a chance to enjoy its considerable beauty without disturbing the ecosystem. It takes about 45 minutes to trek from the parking lot to the suspension bridge and main falls. *This area is currently being repaired due to storm and flooding damage.*

YAMBARU ADVENTURE FIELD & MATAYOSHI COFFEE FARM

Located in Higashi Village on the Pacific coast of northern Okinawa, this facility has it all—ziplines, ATV tours through the wilderness, genuine Okinawa-grown coffee, camp grounds, cottages and more.



Tropical Dream Center

Admission Fees	General	Group (20 or more)
Adult / high school	760yen	550yen
Junior high / elementary	Free	

8:30-17:30 (Oct.-Feb.) 8:30-19:00 (Mar.-Sep.)



Oceanic Culture Museum (Planetarium)

Admission Fees	General	Group (20 or more)
Adult / high school	190yen	80yen
Junior high / elementary	Free	

8:30-17:30 (Oct.-Feb.) 8:30-19:00 (Mar.-Sep.)

Okinawa Churaumi Aquarium



Admission Fees

	General	Group (20 or more)	Annual Passport
Adult	2,180yen	1,730yen	4,360yen
High school	1,440yen	1,140yen	2,880yen
Junior high / elementary	710yen	560yen	1,420yen
Under 6 years old	Admission free		-

- Admission is free for children under 6.
- School groups are eligible for discount. For elementary / junior high / high school activities only. Applications must be made in advance.
- Persons who are designated as physically or mentally disabled are eligible for free admission. Please show your certificate at the ticket counter. Escort (1 person only) is also admitted for free.
- Annual Passport holders can enter Okinawa Churaumi Aquarium as many times as they like for 12 months.



Open Hours

	Open	Last admission	Close
Normal period	8:30	17:30	18:30

*Business hours may be extended during certain periods.

Please check the official website.

- Ocean Expo Park opens at 8:00.
- No Food or Drink inside.
- No Smoking inside.
- No Pets inside (Except for guide and service dogs).



海洋博公園 OCEAN EXPO PARK

For more information

Ocean Expo Park Management Center
424 Ishikawa, Motobu-cho, Kunigami-gun, Okinawa 905-0206
Tel: 0980-48-2741 Fax: 0980-48-3339

<https://oki-park.jp/kaiyohaku/en/>

8:00-18:00 (Oct.-Feb.) / 8:00-19:30 (Mar.-Sep.)





JUNGLIA OKINAWA

A new nature-themed theme park that sits on 150 acres of land between Nakijin and Nago City, JUNGLIA Okinawa opened during the summer of 2025. The park features more than a dozen attractions (including hot-air balloon rides, a large-scale safari ride reminiscent of *Jurassic Park* and much more), entertainment, a unique dining setting and numerous opportunities for relaxation.

NAKIJIN CASTLE

Located on the Motobu Peninsula, Nakijin Castle was once a mighty fortress, designed to defend the rulers of Hokuzan. It was one of the largest and most impressive of the three kingdom-era castles with gardens, stables, several residences for the king's most important aides and a palace for the king at the highest, innermost section. Each year in late January/early February, the many hundreds of cherry blossom trees planted on the grounds bloom, making Nakijin a photographer's paradise.

NAGO

PINEAPPLE PARK

Sweet, delicious pineapples from the fields of Okinawa are used in the production of wine and many other products such as cakes and candies. All can be sampled and purchased at this facility.



OCEAN EXPO PARK

In July 1975, Okinawa International Ocean Expo (Universal Exposition; Expo '75) was held in Motobu. This event, which was themed "The Sea - Its Desirable Future," commemorated Okinawa's reversion from American to Japanese control in 1972. After the event, a park was established on the site in 1976. Called Ocean Expo Park, this venue remains a popular tourist attraction today, featuring museums, an arboretum showcasing tropical and subtropical flora, an aquarium, dolphin shows, several replicas of traditional Okinawan homes, a beautiful beach and numerous events that draw over 4 million visitors annually. Undoubtedly Ocean Expo Park's biggest draw, Okinawa Churaumi Aquarium first opened its doors to the public on November 1, 2002. This facility features four levels and dozens of different areas representing ecosystems and aquatic creatures that can be found along the coastlines of the Ryukyu Islands and their surrounding seas and oceans. Churaumi's Kuroshio Sea Tank—named after the massive ocean current that flows by Okinawa—holds almost two million gallons of constantly refreshed seawater and a variety of Kuroshio species including a whale shark and manta rays. The Kuroshio Sea Tank has ample seating, including the "aqua room," which is an inset area where the walls of the aquarium curve up overhead.

Manza Ocean Park®

Japan's largest aqua park with inflatable obstacles.



Inquiries
098-966-1211
info@anaintercontinental-manza.jp
2260 Aza-Seragaki, Onna, Okinawa 904-0493

**Pack up your beach gear
and gather your family and
friends for a fun day at
Ocean Park!**

*The Ocean Park is open to children 3 and older. Children between the ages of 3 and 12 must be accompanied by an adult (one adult may supervise up to 3 children).



Visit our website for fee information
and latest hours of operation.


ANA
INTERCONTINENTAL®
MANZA BEACH RESORT



NEO PARK OKINAWA

Located in Nago, this theme park is home to hundreds of native and exotic animals, with an emphasis on beautiful birds such as flamingos, toucans and cranes, many of which you can feed by hand. The special feeding areas and petting zoo are favorites among children.



BOTTOM PHOTO BY MIA COX

KOURI ISLAND

This tiny isle is located northeast of the coast of Unten Port in Motobu. Kouri is circular and made mostly of coral. The Kouri Ocean Tower offers the best views on the island from its observation area 82m above sea level and features a seashell museum with a collection of more than 10,000 shells from around the world. The Kourihara Ruins are a group of archeological sites located on the island near Kouri Port that date back to the early-to mid-Okinawa shell mound period (10,000 BC–1185 AD). Artifacts such as ivory and bone products, earthenware, copperware, ironware and blue porcelain—as well as remains of holes for pillars and water wells—have been excavated.

BUSENA MARINE PARK

Located on the grounds of the Busena Terrace Resort Hotel, Busena Marine Park features a unique glass-bottom boat for observing coral and sea life from above as well as an underwater observatory which enables visitors to observe underwater denizens in their natural environment without getting wet.

ORION HAPPY PARK

Born in post-war Okinawa, Orion was established by Sosei Gushiken, who chose to build in Nago because of the abundant supply of clear, clean spring water. Hops and other ingredients are imported directly from Germany. Public tours of the facility are available.

FORKS HAVEN'T ARRIVED YET?
DON'T STARVE! GO TO THE

Lending LOCKER

Inbound and outbound
accompanied personnel
can borrow basic kitchen
items FREE of charge
for 30 days!



Camp Kinser (Bldg. 1220) | 637-2815
Camp Foster (Bldg. 445) | 645-2104/2106
Camp Courtney (Bldg. 4425) | 622-7739
Camp Hansen (Bldg. 2339) | 623-4522

www.okinawa.usmc-mccs.org/irr

MARINE & Family
Information, Referral
and Relocation

MCCS
MARINE CORPS
COMMUNITY SERVICES

Indulge your sweet tooth at

58 SWEETS

Foster Library

Open Daily, 10 a.m.–7 p.m



MCCS
MARINE CORPS
COMMUNITY SERVICES



SUBSTANCE ASSESSMENT AND COUNSELING CENTER

OKINAWA SOBER DRIVE

YOUR MISSION, YOUR LIFE

FEELING
FINE?



DOESN'T
MEAN
SOBER.

KNOW YOUR LIMITS.
PLAN YOUR RIDE.

DUI PREVENTION CAMPAIGN



MCCS
MARINE CORPS

CENTRAL

Central Okinawa is home to the bulk of military installations on the island. Central Okinawa is also home to Onna Village—which boasts far too many beautiful beaches to mention. Onna Village’s coastline features some of the best on island, like Inbu, Seragaki, Fuchaku, Malibu, Tiger and others. They range from resort beaches equipped with every amenity imaginable to deserted stretches where one can curl up under a parasol with a good book and a jug of ice-cold water. Central Okinawa features many family-friendly beaches with all the amenities such as Sunset and Araha Beaches (both in Chatan) as well as Ginowan’s Tropical Beach located near the Ginowan Convention center.





Summer Reading Program



Innovation Lab Offerings



Latest Books & More



Courtney Library

Bldg. 4453
Camp Courtney, Okinawa
622-9280 | 098-954-9280

Foster Library

Bldg. 5679
Camp Foster, Okinawa
645-7178 | 098-970-7178

Futenma Library

Bldg. 403
MCAS Futenma, Okinawa
636-3946

Hansen Library

Bldg. 2339
Camp Hansen, Okinawa
623-7372 | 098-969-7372

Kinser Library

Bldg. 1311
Camp Kinser, Okinawa
637-1039

Schwab Library

Bldg. 3000
Camp Schwab, Okinawa
625-2518

facebook.com/mcsokinawa.educationandlibraries

instagram.com/mcsokibraries

www.okinawa.usmc-mcs.org/libraries

MARINE & Family Library Program

SOUTHEAST BOTANICAL GARDENS

Originally opened in 1970 in northern Okinawa City near Kura-shiki Dam, Southeast Botanical Gardens is a perfect example of Okinawa's power "to grow anything growable." The founder of the gardens was a man named Masamune Obayashi. Originally from Taiwan, he brought in many types of plants from Asia, Central and South America, Africa and Australia to create what he envisioned as a kind of "Okinawan Garden of Eden." Among the most impressive are the varieties of palm trees that were planted as seeds and have multiplied to thousands all stretching towards the heavens today.

Today, Southeast Botanical Gardens is broken into two main areas: The Asian Garden and The Water Garden. The Herb Garden and Juice Parlor are located in the Asian Garden. The main attraction, however, is the impressive collection of king palms lining the promenades; one could spend an hour trying to count how many of these beautiful trees are growing there. As for the Water Garden, this area will delight visitors with its collection of trees that are far from their native homes, having been transplanted from countries thousands of miles away. Both gardens also offer various learning programs and activities for visitors of all ages—including a petting zoo, nature games and craft-making. For more information, visit southeast-botanical.jp/english/index.html.

BIOS ON THE HILL

Bios on the Hill is a relaxing tropical forest park located in Uruma City. Their canopy boat ride is highly recommended, too, as it takes visitors across a lake to view examples of Okinawa's wildlife and native flowers, including an abundance of stunning orchids. They also offer a small petting zoo, hiking, canoeing, kayaking, a play area for kids and more. MCCA Tours+ offers regular tours and discount tickets. For more information, visit www.okinawa.usmc-mccs.org/tours.



ANA INTERCONTINENTAL MANZA BEACH RESORT

One of the more iconic resorts on the island, ANA InterContinental Manza Beach Resort is located on a cape near one of Okinawa's most-recognized landmarks—Manzamo. Among its amenities and restaurants, the resort features an inflatable playground in the shallow pristine waters anchored right off a beautiful sandy beach with over 20 floating mini-islands of delight. From mock-rock climbing and tower scaling to mini slides and jungle gyms, children will be in a watery state of nirvana for the whole day.



THE GRAND HOTEL GINOWAN

THE GRAND HOTEL GINOWAN

SPECIAL MILITARY RATES AND MORE!

FACILITIES AND AMENITIES INCLUDE

- ✓ CONVENIENCE STORE
- ✓ LOUNGE/RESTAURANT
- ✓ SPA & RELAXATION
- ✓ FITNESS CENTER
- ✓ DIVING SHOP AND MORE

HAPPY HOUR

EVERY DAY FROM 4 TO 7 P.M.

REFRESHMENTS AND SNACKS ARE AVAILABLE FOR FREE

+ CONVENIENT LOCATION WITH BOTH OCEAN AND CITY VIEWS

+ SPACIOUS ROOMS WITH LARGE BEDS

Use this QR code to make your hotel reservations.



3-5-1 Oyama, Ginowan City, Okinawa Prefecture, 901-2223

098-898-7700
English-speaking staff available from 8 a.m. to 6 p.m.

halihali

Homemade Pancakes & Waffles

Give us a shot— you won't regret it!

Take Out OK
for All Menu Items



Chatan cafe hallhall: 1-12-11 Chatan, Chatan-cho | 7 a.m.-3 p.m. | Closed Thursdays

Iwakuni cafe hallhall: 7-1-29 Nishimi, Iwakuni | 8 a.m.-3 p.m. | Closed Thursdays

\$/¥/CC chatancafehallhall



RYUKYU MURA FOLK VILLAGE

Located in Yomitan, this folk village is a gateway to Okinawa's past. Consisting of houses and buildings up to 200 years old relocated from various villages in the prefecture and painstakingly restored, Ryukyu Mura captures the essence of a bygone era on the island. Visitors can also observe reenactments of old customs, like the creation of sugar from sugarcane with the help of a water buffalo. Ryukyu Mura also holds classes and workshops that teach visitors how to create traditional Okinawan arts and crafts, including *bingata* (textiles) and pottery. For more information, visit ryukyumura.co.jp/en.



FOREST ADVENTURE PARK IN ONNA

Known as one of Okinawa's most thrilling outdoor athletic parks, Forest Adventure is located high in the hills of Onna Village. Its many attractions, such as the Zip Slide Ride, Amazon Rope Bridge, Tibetan Bridge and others, offer breathtaking views of the East China Sea in the distance. MCCS Tours+ offers regular tours and discount tickets (children must be at least six years old and 56 inches tall to participate). For more information, visit www.okinawa.usmc-mccs.org/tours.

YACHIMUN-NO SATO

Yachimun-no-Sato, or the Village of the Potters, is a small community of pottery masters from throughout the island that live and create ceramic works of art together in Yomitan Village. The centerpiece of this small village is the climbing kiln designed by master potter Shinman Yamada. Not limited to pottery, Yachimun-no-Sato is also home to Seikichi Inamine—a master in the creation of blown glass art. Mr. Inamine is famous for his experimentation with different natural materials, fusing substances such as curry powder, coffee grounds, potters clay and more into molten glass to extract spectacular colors.

NIGHT ZOO
every weekend & national holidays



OKINAWA ZOO & MUSEUM



OKINAWA
KODOMO no KUNI
ZOO & MUSEUM

5-7-1, Goya, Okinawa City,
Okinawa 904-0021, Japan
tel:098-933-4190
mail:info@okzm.jp

OPENING HOURS

	OPEN	Last admission	CLOSE
[Weekdays]	9:30 a.m.	4:30 p.m.	5:30 p.m.
[Weekends & holidays]	9:30 a.m.	8:00 p.m.	9:00 p.m.

For more information visit, www.okzm.jp

TAIYO GOLF CLUB

FREE RIDE PROGRAM



MONDAY-SUNDAY*

FIRST PICK-UP 9 A.M. LAST DROP-OFF 6 P.M. PICK-UP LOCATIONS: CAMPS FOSTER, COURTNEY AND HANSEN

622-2004/2006 | 098-954-2004/2006
www.okinawa.usmc-mccs.org/golf



TAIYO G.C.
OKINAWA JAPAN

MCCS
MARINE CORPS
COMMUNITY SERVICES

TRADITIONAL THAI FULL-BODY MASSAGE
 AROMA OIL MASSAGE
 FOOT REFLEXOLOGY



Recover.
 Reset.
 Recharge.

Thai Massage

Book Now



- One Client at a Time
- By Appointment Only
- Men & Women Welcome
- Credit Cards Accepted

Traditional Thai Massage
YUKUIDOKI



HELP US HELP YOU!
 SHARE YOUR SUGGESTIONS FOR MCCS VIA ICE.

ICE



SCAN ME!

MCCS
 MARINE CORPS COMMUNITY SERVICES

ASIAN DECOR

Japan's largest scale and variety of natural material furniture/decorative items and marvelous goods...
 All imported directly for the lowest prices to you.

GOOD CULTURE - GOOD EARTH

CHIKYU ZAKKA

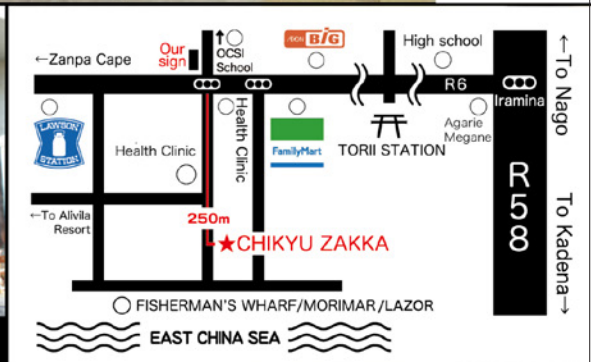




CHIKYU ZAKKA WAREHOUSE

OPEN 10:00-19:00
 CLOSED 1-3 JAN

☎(098)956-1168 / 157-1 Toya Yomitan

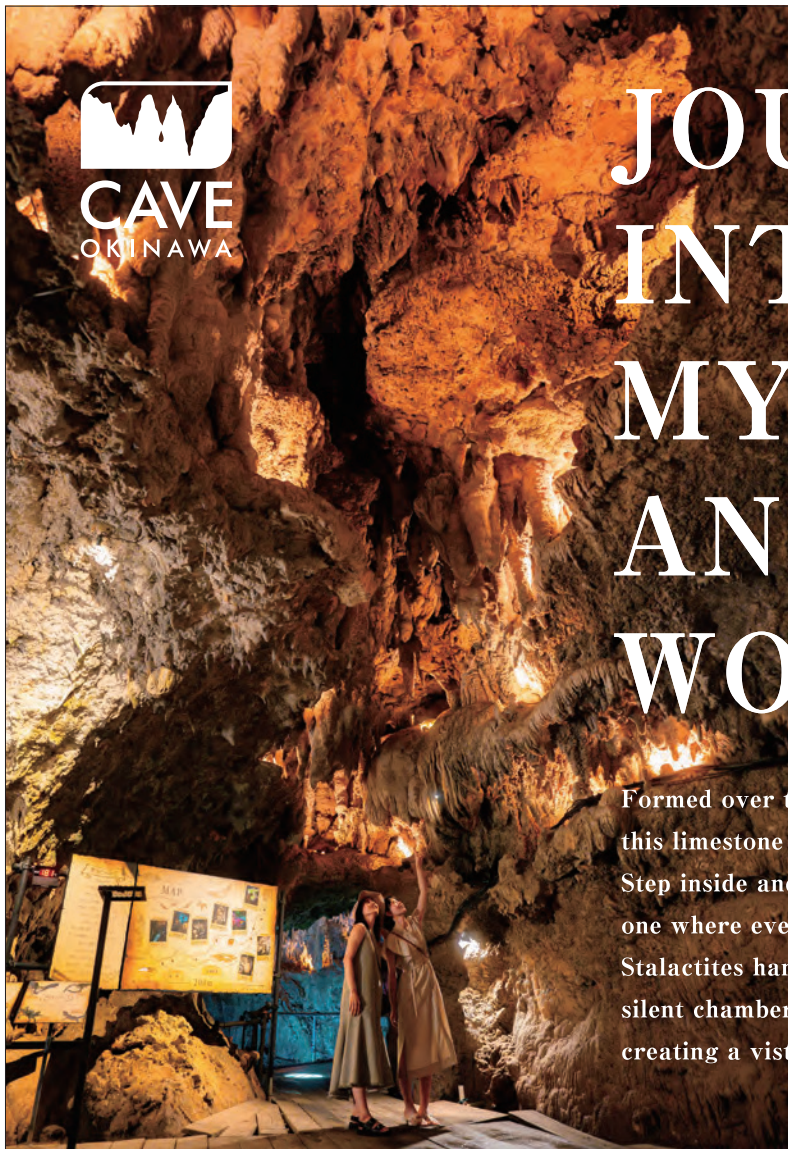


← Zanza Cape Our sign ↑ OCSI School → High school
 ← To Alivila Resort → Health Clinic Health Clinic FamilyMart TORII STATION → To Kadena →
 ← To Nago → R6 Iramina
 Agarie Megane
 250m
 ★ CHIKYU ZAKKA
 ○ FISHERMAN'S WHARF/MORIMAR/LAZOR
 EAST CHINA SEA



JOURNEY INTO MYSTERY AND WONDER.

Formed over tens of thousands of years—
this limestone cave is shaped by unfathomable time.
Step inside and you enter another realm,
one where everyday reality slips away.
Stalactites hang from the ceiling,
silent chambers spread out below,
creating a vista that is, truly, nature's own art.



Mystery and Inspiration

The limestone cave, created by nature over tens of thousands of years, offers an experience that makes you feel as if you have wandered into another world. The illuminated cave creates a fantastical space with scenes such as a "world of blue" and a "world of color," capturing the hearts of visitors.



ENJOY THE CAVE

CAVE OKINAWA is attractive for its structure and mechanisms that give you a sense of exploration. Families with children and groups of friends can share the excitement and have a memorable experience through "adventure," "discovery," and "surprise."



History of life

Two miracles are engraved in this cave. One is the story of how the life of King Nakijin was saved during the Ryukyu Kingdom era. The other is a special place where many residents were saved by American soldiers during the war, and not a single person lost their life.



FOREST CAFE

"FOREST CAFE" is a cafe surrounded by Okinawa's unique banyan trees. It's a relaxing space surrounded by nature at the exit of a limestone cave. We offer drinks and food, with a focus on desserts produced in Okinawa. We also sell souvenirs made in Okinawa.



Adults
(Aged 15 and up)
¥1,200

Children
(Ages 3 and up)
¥600

Infant
(Under 2)
Free

Opening Hours
9:00 ~ 17:30
Last entry 17:00 / Daily

Extended Hours
Spring-Summer & GW
*For details, see our website.

📍 Address 479-1 Ishikawa Kadekaru, Uruma City, Okinawa Prefecture



MURASAKI MURA

In 1992, a television miniseries on the history of the Ryukyu people was produced by NHK (Nihon Housou Kyokyu, the Japanese equivalent of PBS). This half-year series, entitled *Ryukyu no Kaze* (The Wind of Ryukyu), was televised from January to June in 1993 on the NHK channel as part of the national historical “Taiga Drama” series. The sets and facilities created in Yomitan were realistic reconstructions of ancient structures of the Ryukyu Kingdom.

The set included traditional structures such as *Tenshikan* (living quarters for envoys and missions from China), the *Tenpi Gu* (the shrine for praying for safe sea voyages), red-tiled roofs of houses for the ruling class, thatched-roof farmhouses and more. Constructed by the company Umi-no-Sato, the set was converted to a tourist attraction and renamed Murasaki Mura.

TABLE TOP GAME



SELL YOUR CARDS!



Follow us on SNS!



BUY & SELL

- Magic: The Gathering
- Pokemon Card
- Table Top Games

OPEN 13:00▶21:00
☎ 098-979-7168

ON LINE SHOP



MAP



ID REQUIRED FOR APPRAISAL Residence Card + Passport / Military ID



ZAMPA MISAKI (CAPE ZANPA)

Featuring one of the most photographed lighthouses on the island, Zampa Misaki's rocky cliffs are often populated with fishermen clinging to ledges. Zampa also features a beach as well as a park with a bike path, playground, sports facilities and a restaurant, marked by a gargantuan lion dog. The giant *shīsā* of Zampa Misaki is reputedly the largest specimen on the island. The *shīsā* faces Asia, guarding travelers as they depart as well as welcoming those returning from long journeys.

NAKAGUSUKU CASTLE RUINS

The ruins of this castle sit on the summit of a 200-meter-high hill offering a panoramic 360° view of the island. It is one of the largest castle ruin sites on the island and is comprised of six structures. Although the exact age of the original structure is not clear, the third structure was built during the mid-14th century. The Nakagusuku Castle ruins were designated a tangible cultural asset by UNESCO in 2000.

FUTENMA SHRINE

Located on Route 330 close to Camp Foster, this 500-year old Shinto shrine is visited by tens of thousands of Okinawans making their first shrine visit of the year during *Oshōgatsu* or New Year's. It is also a popular venue during *Kodomo-no-hi*, *Shichi-go-san* and *Setsubun* holidays. The shrine also features an underground limestone cave that has been a place of worship since ancient times. Next door lies the Jingu-ji Temple, a Buddhist place of worship.



ZAKIMI CASTLE

Zakimi Castle, located high above Yomitan Village atop a 125-meter-high hill, was built during the 15th century as a home for Lord Gosamaru. Today, both the ruins and the surrounding area are maintained as a park where people can enjoy a panoramic view of the East China Sea.



INDULGE IN PREMIUM WAGYU

Conveniently located in Chatan,
just minutes from
Camp Foster and Kadena!



WAGYU RESTAURANT
NOBU
TEPPAN STEAK & YAKINIKU etc.

Hours

Lunch : 11:30 - 15:30 (Last order 14:30)

Dinner : 17:30 - 22:00 (Last order 21:00)

- English Menu Available
- All Major Credit Cards Accepted
- Private Dining Rooms Available
- Free Wi-Fi & Parking

137-4 Yoshihara, Chatan-cho | 098-989-5229

Scan for Map



Instagram



HOTEL NIKKO ALIVILA RESORT

Showcasing a Spanish motif, Alivila features lush decor, patterned marble floors, iron sconces and over-sized chandeliers. The hotel itself sits on a cove, creating a strip of sandy beach with a secluded feel. All rooms have views of the water and small balconies for guests to catch the sea breezes. The resort also features an extensive spa and a wide variety of marine activities, field sports and five-star restaurants.

AEON MALL OKINAWA RYCOM

One of the island's largest shopping malls, AEON Mall Okinawa Rycom, opened in 2015. Not only great for shopping, this mall features Okinawan food, culture and entertainment, as well as a 100-ton aquarium on the first floor. At night, enjoy dining and a panoramic view from the 5th-floor roof garden. The Okinawa Rycom AEON Shopping Mall has a total of 80 food facilities including restaurants offering local and international foods.

PLAZA HOUSE SHOPPING CENTER

Constructed in 1954, Plaza House Shopping Center consisted of Rogers (a department store featuring high-end imported products), Getsuen Hanten (still considered one of the best Chinese restaurants on the island) and more. The shopping center catered primarily to American service members and their families stationed on Okinawa during post-war rejuvenation and is still going strong.

OKINAWA KODOMO NO KUNI ZOO AND MUSEUM

Located in the heart of Okinawa City, *Okinawa Kodomo no Kuni* (which translates to "children's land," is the southernmost zoo in Japan. Originally opened in 1970, it was almost completely renovated in 2004 with the addition of the Wonder Museum for kids. Today, it is home to over a thousand animals including local and exotic species.



CHATAN

Chatan Town's interesting sights are divided into three smaller areas: Sunabe, home to trendy restaurants and cafes as well as many surf and dive shops along the seawall; Mihama, a fusion of Japanese and American sensibilities; and Hamby. Located in close proximity to Kadena Air Base and Camp Foster, both Americans and Okinawans are offered the opportunity to share their experiences and customs with one another. Chatan's main shopping area is called "American Village," which is based on the design of the San Diego seaport. This harmonious blending of Japanese and American favorites features three Starbucks within a one-mile radius, a large department store, countless restaurants, a multiplex theater and more. Hamby, which takes its name from the small airfield that used to cover most of the area, was one of the first parts of Chatan to see rapid development and land reclamation. Passing along the road parallel to Route 58, one would never know that this area used to offer a relatively unobstructed view of the East China Sea. Today, Hamby is home to the beloved Araha Beach and offers many unique shopping opportunities, ranging from eclectic fashion and knick-knacks to furniture, high-tech camera gear and more.

SISTER



Santa Monica International School

Santa Monica Group Co., Ltd.



*Santa Monica International School (SMIS) is a secular English-speaking
Preschool and Kindergarten. We are member of
International Schools Association (ISA) and
Tokyo Association of International Preschools (TAIP)*



INTERNATIONAL SCHOOLS ASSOCIATION

Please call us at 098-936-3656 or visit our website www.smisoki.com for additional information and/or to setup an appointment to visit SMIS.

SCHOOLS



Zion Christian Academy International



25 years of Excellence

Zion Christian Academy International (Zion) is an Independent Private School. We serve the 1st through 12th Grades and dedicate ourselves to high academic standards, creativity, and curiosity. We are members of the Association of Christian Schools International (ACSI) and an affiliate school of Liberty University Online Academy.

Students who graduate from Zion Christian Academy International's program attend colleges such as:
Georgetown University (Washington, D.C.), Columbia University (New York), Kansas State, Virginia Tech, Waseda University, Temple University, Liberty University, Pennsylvania State, and many more.



LIBERTY UNIVERSITY
Online Academy



Please call us at 098-936-9986 or visit our website www.zcaiokinawa.org for additional information or email info@zcaiokinawa to set up an appointment.

welcome
EAGLE LODGE
 U.S. MILITARY APPROVED
Make yourself at home



- Lodging rooms for rent on daily & monthly basis.
- Close to Camps Lester, Foster, & Kadena Air Base.
- Serene, spacious & comfortable suites.
- TV, internet connection & kitchenette in every room.
- Pet area and playground for children on premises.

098-936-3651



Pay Your
Okinawa Bills
 Straight From Your
U.S. Account.



The simple, secure way for U.S. military families to manage local payments



ONEPAYMENT
 SIMPLE. SECURE. SMART PAYMENTS



**Arts
 &
 Crafts**



**THE FOSTER
 ARTS & CRAFTS
 CENTER**

www.okinawa.usmc-mccs.org/fosterartsandcrafts

**THE COURTNEY
 ARTS & CRAFTS
 CENTER**

www.okinawa.usmc-mccs.org/courtneyartsandcrafts



NAKAMURA HOUSE

Located in Kitanakagusuku, this traditional structure is an example of a wealthy Okinawan farmer's home from 250 years ago. The house is surrounded by stone walls and fukugi trees for protection against fires, typhoons and bad luck. Now a living museum highlighting the everyday style of life during the Ryukyu Kingdom era, Nakamura House is an extremely informative place to visit.



SOUTH

Southern Okinawa is home to Naha—the largest (and capital) city of Okinawa. Urasoe City, directly to the north, is also a densely populated area that hosts Camp Kinser. Southern Okinawa features many opportunities for shopping, dining and entertainment as well as beautiful coastlines, rustic fishing villages, acres and acres of farmlands, parks dedicated to those who lost their lives during World War II and much, much more.



WATCH VIDEO



Your lunch mission on Kokusai Dôri starts here!

Meet the Meat.

WEEKDAYS

ALL-YOU-CAN-EAT
with tortillas
for your tacos

SAT, SUN
HOL

ALL-YOU-CAN-EAT
with free-flow
sparkling wine

THE ORION
BEER DINING

Orion

THE ORION BEER DINING

Ryukyu Orion Hotel Naha Kokusai Dôri
1F 1-2-21 Asato, Naha City, Okinawa 902-0067

BOOK NOW



More Fun. More Okinawa.

Ryukyu Orion Hotel

Naha Kokusai Dôri



SAN A PARCO CITY MALL

Located in Urasoe City on the coastline next to Camp Kinser, PARCO CITY Mall took the crown of “largest mall on Okinawa” from AEON MALL Okinawa Rycom. The mall features many shops representing fashion brands such as H&M, Zara, Levi’s, The North Face, Birkenstock, Coach and many others. In addition, various specialty shops such as Hobby Shop G-Soul (which specializes in anime and comic-related toys and models) and the Lego Store (which specializes in...LEGO) will thrill the kids. Malls worldwide are known for their food courts and PARCO CITY does not disappoint with three levels of every cuisine imaginable—including stateside chains such as Panda Express and 31 Flavors, local favorites A&W and Steak House88 and tons more. PARCO CITY is also home to United Cinemas, a multiplex offering 11 screens including IMAX with Laser, 4DX and 270° ScreenX.

SHURI CASTLE

Shuri Castle was originally built at the end of the 14th century during the reign of King Satto. It served as the king’s headquarters and ceremonial hall until 1879. Although the majority of the castle was destroyed in a fire in late 2019, it is currently being rebuilt with plans to reopen in autumn 2026.

KINJOCHO STONE ROAD

This stone road, with ancient limestone paving, is a preserved piece of Ryukyu Kingdom history. This boulevard features a quaint red-roofed, traditional-style rest house halfway up the narrow road and sacred sites along the way, including the stone well behind the rest house and a rare 300-year-old akagi tree.



TOP PHOTO: COURTESY OF SAN A PARCO CITY



With respect and gratitude for your endeavors in a foreign land.

Make your stay on Okinawa an unforgettable treasure. Why not deepen your family bonds with an exclusive experience only found here?

Get Closer Than Ever.



Thrilling interactive encounters \times Exciting fantasy experience

Show military ID and get **▶ 30% OFF** admission!

20 minute drive from Naha Airport^{※1}

Check our official website for more details!

<https://kariyushi-aquarium.com/>

kariyushi aquarium

検索



DMM KARIYUSHI AQUARIUM

Business hours **9:00 ▶ 19:00** (open all-year-round)

Last admission is 1 hour before the end of business hours.



^{※1}Days and hours of operation are subject to change without notice. Entry to the museum may be restricted due to congestion. ^{※1}Travel time may vary depending on traffic conditions.

FUKUSHU-EN GARDEN

This Chinese-style garden was constructed jointly by Naha City and its Chinese sister city, Fuzhou. The trees, plants and flowers represent the different seasons of the year. Something is always in bloom in the garden, and the three different areas represent light, seclusion and beauty.



SHIKINA-EN

Located in the Maji District of Naha City, this remnant of the days of the Ryukyu Kingdom was originally owned by the Sho Family—descendants of Ryukyu kings. Shikina-en was destroyed during WWII and was reconstructed after reversion to Japan.

JAPANESE NAVAL UNDERGROUND HEADQUARTERS

This extensive system of caves located in the middle of bustling Naha City served as the headquarters of the Japanese forces stationed on Okinawa during WWII. The tunnels are up to 30 meters underground and run in all directions throughout the area. MCCS Tours+ offers regular tours; visit www.okinawa.usmc-mccs.org/tours for the latest information and tour dates.



Unforgettable Moments with Goldfish



UWS AQUARIUM x THE OKINAWA TIMES

OKINAWA KINGYO MUSEUM

OKINAWA OUTLET MALL ASHIBINAA

An Ethereal World of Goldfish and Art

A one-of-a-kind, sensory-stimulating and photogenic space that blends goldfish, art, Japanese and Okinawan culture. Brought to you by UWS, Japan's leading entertainment aquarium group led by aquarium creator Gakyo Miyazawa. Now Open!

Opening hours 11 a.m. – 7 p.m.

Last admission is 30 minutes before the museum closes

Closed days Irregular holidays

The museum may be temporarily closed or have different opening hours depending on the time of year or event. In such cases, we will make an announcement in advance, so please check before visiting.

ACCESS



WEBSITE





TSUBOYA YACHIMUN STREET

Tsuboya is often stumbled upon by chance when wandering through the vast maze of Heiwa Dori. Known for its concentration of potters, even the name itself means “shops specializing in pottery.” It is believed that the first kilns were built in Tsuboya in the late 1600s during the reign of King Sho-Tei. The majority of work was *arayachi* (unglazed)—primarily jars and storage containers which usually held rice, soybeans, and *miso* (soybean paste). In the beginning, all ceramic *shisā* were of the unglazed variety. And since Tsuboya was the mecca of *arayachi* pottery, most established practitioners had learned their craft in Tsuboya. Originally there were more than ten kilns in the district, but only one survived the devastation of WWII. This kiln, known as *Fuēnū Gama* (southern kiln) is located on *Yachimun-Dori* (Pottery Street) in Tsuboya, next to the Tsuboya Pottery Museum.

NAHA KOKUSAI STREET

Located in Naha City, the name translates to “International Street.” This road is lined with shops, department stores, restaurants and the famed Heiwa-Dori, a maze of stalls peddling fresh fish, flowers, produce, handi-crafts and a myriad more.

SAKURAZAKA

Sakurazaka is located “off of the beaten path” in many ways. Known by old-timers as one of the first entertainment districts (as in the type adults enjoy in the evening), it was the kind of place that the word “seedy” would aptly describe. However, things changed with the opening of one of the island’s first movie theaters in 1953. This theater, as well as the area, went through many name changes over the decades before finally closing in 2005. Today, Sakurazaka is a curious mixture of old and new, of decrepit buildings and the sparkle of neon. Although there are still a few shops that don’t open until late in the evening, Sakurazaka has taken a turn to the bohemian, with small shops hawking artwork or clothing featuring cutting-edge design and obscure labels. The theater that closed in 2005 was reopened featuring local artists’ works, indie films and concerts by local indie-label bands.

AFFORDABLE AUTO DETAILING



HAND-WASHING & WAXING | INTERIOR CLEANING

AVAILABLE BY APPOINTMENT & WALK-INS
TUE-SAT | 9 A.M.-6 P.M. | KINSER TYPHOON MOTORS

637-2191 | WWW.OKINAWA.USMC-MCCS.ORG/TYPHOON-MOTORS



WIN-WIN

Show your support for the military community on Okinawa while showcasing your business or brand!

PRODUCT AWARENESS



GREAT ROI



AND MORE!



MCCS MARKETING

COMMERCIAL ADVERTISING & SPONSORSHIP DEPARTMENT

645-2245 / 098-970-2245 | sales@okinawa.usmc-mccs.org



TEAMLAB FUTURE PARK OKINAWA

Located inside T Galleria, teamLab Future Park Okinawa is a permanent interactive art exhibit created in collaboration with world-renowned international art collective teamLab. This exhibition features ten different areas including *Animals Living with Flowers II*, *Sketch Aquarium: Connected World*, *Light Ball Orchestra* and many more. Visit dfs.com/en/okinawa for more info.

APPLE TOWN

Located next to the Rakuichi Shopping Center, Apple Town consists of a COOP grocery store, a large collection of restaurants on the second floor (offering Italian, sushi, Chinese and more) and a Toys “R” Us.

RAKUICHI SHOPPING CENTER

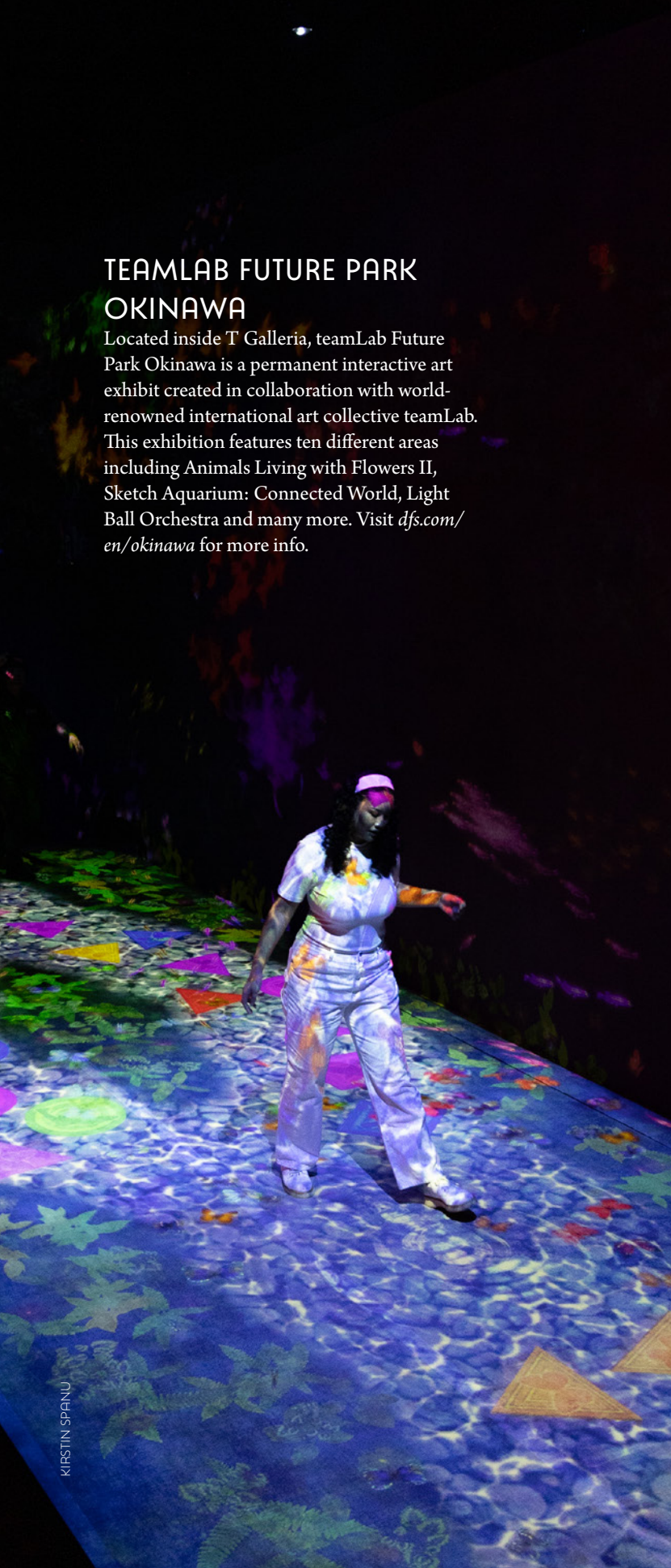
Although not technically a mall, Rakuichi Shopping Center (located in the Naha Shintoshin area) is definitely worth your time on a hot Okinawan summer afternoon. With a handful of stores located side by side, Rakuichi features a wide selection of shops such as MUJI, a UNIQLO clothing emporium, a large electronics store, a Ryubo grocery store with a small food court, several restaurants and one of the largest sports and outdoor outfitters on island called Sports Depot.

SAN-A NAHA MAIN PLACE

Main Place, located next to the Prefectural Art Museum (which is next to Apple Town), is a large, modern mall filled with clothing boutiques, shoe and handbag vendors, home and interior stores, knick-knack shops, restaurants, snack bars and even a movie cineplex. San-A Main Place is a much larger version of other typical San-A department stores found throughout the island and it may floor you with its multi-level massiveness.

T GALLERIA OKINAWA

This collection of famous high-end shops such as Gucci, Fendi, Mont Blanc, Louis Vuitton, Prada and others is the last in the string of malls in Shintoshin. Travelers leaving Okinawa (even for destinations inside Japan, such as Tokyo) should take advantage of the lower prices offered here.



Timeless Hospitality, Modern Comfort



NAHA



OKINAWA HARBORVIEW HOTEL

2-46, Izumizaki, Naha-shi, Okinawa

TEL. 098-853-2111

<https://oka-hvh.com.e.asa.hp.transer.com/>





Oriental Hotel Okinawa Resort & Spa
is an Official Partner Hotel of
JUNGLIA OKINAWA

Love Okinawa Discover Yambaru



JUNGLIA
OKINAWA



NAGO



**ORIENTAL HOTEL
OKINAWA RESORT & SPA**

1490-1 Kise, Nago City, Okinawa
TEL. 0980-51-1000

<https://www.okinawa.oriental-hotels.com/en/>





SUNDAY BREAKFAST BUFFET

CAMP KINSER SURFSIDE | 8:30 A.M.–1 P.M.
Adults: \$9.95 | Child (5-11): \$4.95 | 5 And Under: Free
Breakfast Favorites • Omelet & Griddle Stations



637-3137

www.okinawa.usmc-mccs.org/surfside

KINSER SURFSIDE



OKINAWA PREFECTURAL MUSEUM & ART MUSEUM

This sprawling facility features several cultural treasures salvaged from the ravages of war and time. Within the grounds are a museum dedicated to natural and cultural history, an art museum that primarily exhibits modern and contemporary artwork from Okinawa and an outdoor exhibition area featuring displays of traditional Okinawan houses. All buildings feature a *gusuku* (castle) design motif, and the compound is surrounded by limestone walls echoing styles used during the days of the Ryukyu Kingdom.

The museum's permanent exhibition theme is "Life, Island and Sea—Seeking Abundance, Beauty and Peace," and the museum is broken into several different sections showcasing different facets of Okinawan human and natural history. The departmental exhibition galleries present natural history, archaeology, history, arts and crafts and folk culture and feature materials that range from representations of Okinawa's natural environment 200 million years ago to resources from contemporary Okinawa.

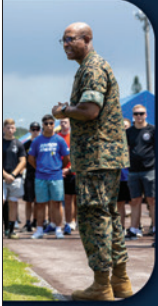
ASHIBINAA OUTLET MALL

Designed by architect John Law, this open-air style mall located in Toyosaki features a multitude of shops including many that are internationally recognized. The mall also features several local shops such as Ryukyu Leather L.L.A (specializing in hand-made leather goods) and Ryukyu-no-Sato, which sells a great selection of locally made *Kariyushi* shirts (collared

summer clothing similar to aloha shirts). Ashibinaa also houses many restaurants serving a variety of cuisines and a food court that would do the Galleria in its heyday proud.

IIAS OKINAWA TOYOSAKI

One of Okinawa's newest malls, iias Okinawa is located within walking distance of Okinawa Outlet Mall Ashibinaa and the beautiful Toyosaki Beach. Featuring 155 vendors, iias houses a PGA Tour Superstore for golf fanatics, fashion emporiums H&M, UNIQLO and GU, restaurants such as Luke's Lobster, Sam's (as in "Sam's by the Sea"), Taco Rice Café Kijimuna and many others. As if this wasn't enough, iias is also home to the DMM Kariyushi Aquarium—Okinawa's newest destination for experiencing sea life on dry land.



ENGAGE WITH COMMUNITY, DISCOVER GROWTH OPPORTUNITIES!

VISIT YOUR NEAREST SMP CENTER FOR MORE INFORMATION.

FOSTER (BLDG. 5908)
645-3681
MON-FRI: 7:30 A.M.-8 P.M.
SAT: 11 A.M.-8 P.M.

HANSEN (BLDG. 2377)
623-3017
MON-FRI: 10 A.M.-7 P.M.
SAT: 11 A.M.-8 P.M.

COURTNEY (BLDG. 4423)
622-7105
MON-SAT: 10 A.M.-7 P.M.

KINSER (BLDG. 1220)
637-3258
MON-SAT: 10 A.M.-7 P.M.

FUTENMA (BLDG.
103/104)
636-1015
MON-SAT: 10 A.M.-7 P.M.

SCHWAB (BLDG. 3429)
625-1119
MON-SAT: 10 A.M.-7 P.M.

For locations and hours of operation,
email singlemarineprogram@okinawa.usmc-mccs.org
or visit www.okinawa.usmc-mccs.org/smp



DMM KARIYUSHI AQUARIUM

DMM Kariyushi Aquarium is unique in that it mixes both virtual and real sea creatures in a brand-new experience that the whole family will enjoy. This aquarium even offers a phone app that you can download to help guide you through your journey. The entire second floor of DMM Kariyushi Aquarium is home to freshwater fish, reptiles, amphibians and more from a variety of different ecosystems. Upon descending to the first floor, visitors are greeted by several tanks highlighting a dazzling variety of tropical fish and coral ranging from pulse, orange cup and purple-tipped acropora corals to more mobile denizens such as clownfish, gobies, flounders, shrimp, lobsters, crabs, moray and garden eels, seahorses, cowfish and more.

The “main course” of DMM Kariyushi Aquarium is, of course, the largest tank in the facility, which sports a large window and smaller circular windows, offering views of schools of Indian mackerel, rays, larger sharks, snappers, groupers and more—including a sea turtle. However, what makes this aquarium unique is the immersive virtual experience. At the “virtual aquarium” exhibit, visitors can also view realistic displays of creatures that would be impossible in an actual aquarium—including an encounter with a giant squid over 18 meters in length and living in waters at depths of over 500 meters.



EMELINE TOOLE

ITOMAN HAKUGIN SHRINE

Local residents believe that this shrine houses the god of the sea. Many pray at Hakugin Shrine for safe voyages at sea and bountiful ocean harvests. A large rock, known as the “god rock,” sits in the southern end of the shrine. During the 1st and 5th months (during the dragon boat races) of the lunar calendar, priests known as *nichu* gather here to pray.

ITOMAN OCEAN PARK

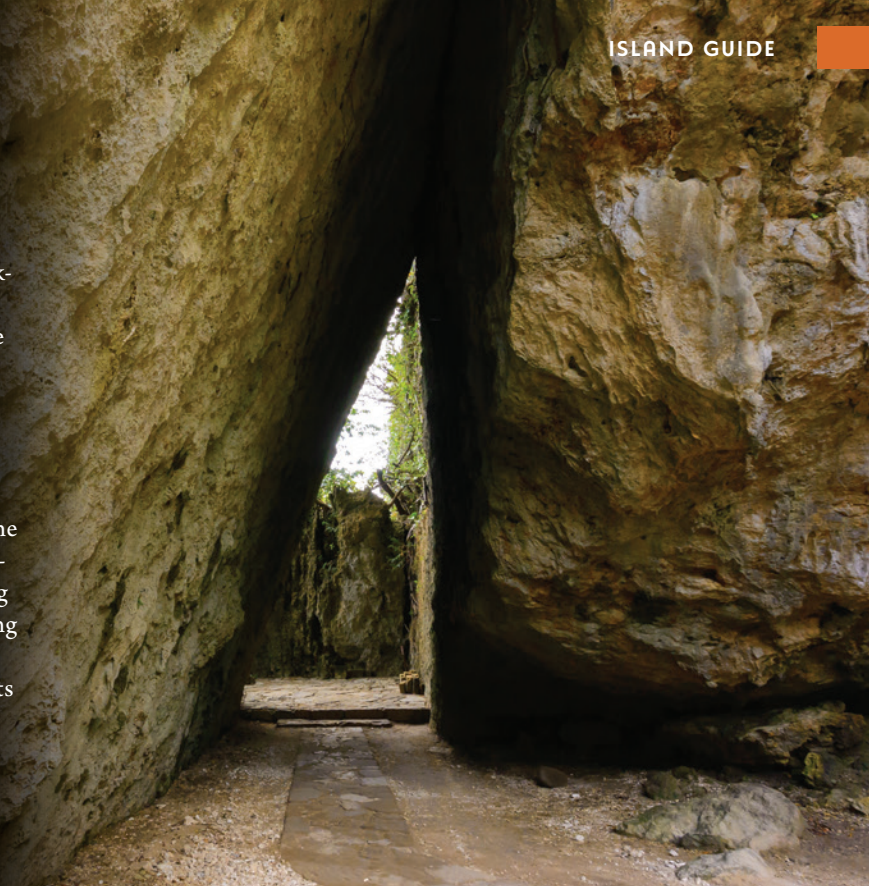
The Itoman Ocean Park is located on the southern tip of Nishizaki near the Itoman Police Station. The park contains walking paths and a large clearing that’s used for events, sports and recreational activities. The Ocean Park also contains a restored house dating back to the early 1900s which offers visitors a glimpse into the life of old-school *uminchū* (fishermen).

FREE COMEDY, CONCERTS *& more!*



SĒFĀ UTAKI

One of the most noteworthy of the remaining *utaki*, or “Okinawan holy places,” is Sēfā Utaki, located on the tip of the Chinen Peninsula overlooking Kudaka Island (believed to be the island of the gods). As one of the seven original *utaki* created by the founding goddess of Ryukyu, Sēfā Utaki is considered one of the most sacred places on the main island. It is also recognized by UNESCO as a World Heritage Site. This grove is one of the few *utaki* that has a marked focal point—two solid stones weighing several hundred tons each and leaning against one another to create an inverted ‘V’ shape. While many tourists visit Sēfā Utaki, it is still sacred and considered a place of power.



AZAMA SAN-SAN BEACH

Azama San-San Beach, located off Route 331 next to the Chinen Marine Leisure Beach, boasts fine, white sand and azure water, as well as umbrella, lounge chair and float rentals, a first aid station, lockers, showers, restrooms, changing areas, a snack bar with plenty of covered benches and picnic areas, and a shop selling beach gear and food. Next door is a marina offering glass-bottom boat tours, dive boat trips and ferry rides to Komaka and Kudaka Islands (which offer some of the island’s best snorkeling).



SHISA PIZZA

CAMP FOSTER

Bowling Center (Bldg. 5670)
098-970-1599 / 645-1599

CAMP COURTNEY

Bowling Center (Bldg. 4234)
098-954-7365 / 622-7365

www.okinawa.usmc-mccs.org/shisapizza



OKINAWA PREFECTURAL PEACE MEMORIAL MUSEUM

Okinawa Prefectural Peace Memorial Museum (a.k.a. Peace Memorial Park) is located in Mabuni, where one of the final confrontations of the Battle of Okinawa took place. During this battle, the Japanese commander, Lieutenant General Ushijima, and General Isamu Cho, the Chief of Staff of the Japanese 32nd Army, committed ritual suicide at Mabuni Hill. Memorial towers and engraved stone monuments representing 31 prefectures and 10 groups, as well as the “Cornerstones of Peace,” the Okinawa Prefecture Peace Memorial Museum, the Peace Hall and the National Battle of Okinawa Victims’ Memorial are all present. MCCS Tours+ offers regular tours; visit www.okinawa.usmc-mccs.org/tours for the latest information and tour dates.



KIRSTIN SPANU

CHINEN CASTLE

Not far from Sēfā Utaki lies one of the oldest and surprisingly lesser-known castle ruins on island. When asked to name a *gusuku* (a stone-walled castle or fortress), most islanders will name Shuri Castle, Nakijin, Nakagusuku or Katsuren. However, while these sites are all larger, Chinen Castle is considered one of the oldest and most important due to its proximity to several sacred sites. The castle is located high atop a hill overlooking the ocean and surrounded by ancient primeval forests like many of its sister-*gusuku*. During ancient times, Chinen Castle was regularly visited by the reigning monarch and the supreme priestess of the court. Originally two enclosures, all that remains today are some walls ranging in height from 1.5 to 2 meters high, two gates—the main and the west—and the remnants of the sacred groves (one dedicated to Hinukan, the god of fire) inside the castle grounds. After the fall of the Ryukyu Kingdom, Chinen Castle served as the municipal government offices of Chinen until 1893. Not far from Chinen Castle lies an area believed to be where rice was first planted on the island. Received as a gift from Amamikiyo, rice was planted in a small field called Chinen *Ukkaa* and fed by a fresh-water spring called *Ufkaru*.

HIMEYURI-NO-TO

Itoman’s Himeyuri-no-To and the Himeyuri Peace Museum commemorate the students of both the Okinawa Women’s Normal School and the First Prefectural Girls’ High School—collectively known as Himeyuri (from *hime*, meaning princess, and *yuri*, meaning lily). When the battle began to intensify, the Himeyuri Student Corps was sent to tend to the wounded in the south in a hospital comprised of man-made caves. More than 100 girls lost their lives—some from self-inflicted wounds. MCCS Tours+ offers regular tours; visit www.okinawa.usmc-mccs.org/tours for the latest information and tour dates.

Johnny's Used Cars



**Large selection of higher quality vehicles to choose from!
Our vehicles are graded accident free from mainland Japan!**



**1 Year, Bumper to
Bumper Warranty**

**24 Month, Interest
Free Financing**

Why Johnny's Used Cars?

- ▶ Serving The Military Community for Over 50 Years
- ▶ Friendly, English Speaking Staff
- ▶ 1 Year, Bumper to Bumper Warranty
- ▶ All Vehicles Include a New 2 Year JCI and Current Road Tax
- ▶ 24 Month Financing with NO Interest
- ▶ All Major Credit Cards Accepted
- ▶ Highly Trained Mechanics
- ▶ Insurance and Renewals, Deregistration/Junking Services and More
- ▶ Free Loaner Vehicles (Availability Basis)
- ▶ Detailed Videos of Inventory on Our Website

Mon-Fri: 9:00am - 6:00pm
Sat: 8:30am - 5:30pm
Sun: 11:00am - 5:00pm

Tel: 098-982-0312



*Johnny's is conveniently
located right outside of
Foster's Gate#6*

www.johnnys-cars.com



RYUKYU GLASS FACTORY

Just seeing the building that houses the Itoman kiln in full daylight is worth the trip itself—the Ryukyu Glass Factory is almost completely covered with rounded tiles made from multi-colored Ryukyu glass and painted pieces of Ryukyu Pottery. Inside the open-air factory, visitors can watch artisans create works of glass art. Also attached to the factory are a gift shop and a museum where visitors can view pieces created by legendary masters such as Koei Oshiro and Masao Tobaru.

MIA COX

RYUKYU

LACQUERWARE SHOP

Ryukyu Lacquerware Shop, located in Itoman, was established over 90 years ago. At this shop, visitors can experience an art form that China introduced to Okinawa during the 14th and 15th centuries. Some of the techniques include *chinkin* (gold appliqué), *raden* (oyster shell appliqué) and the relief appliqué technique unique to Okinawa known as *tsuikin*. Visitors can also try their hand at creating their own piece of Ryukyu art.

GYOKUSENDO CAVE

Located in the Okinawa World Theme Park, Gyokusendo is Japan's second-longest grotto featuring an underground stream, a golden waterfall and more than over 900,000 stalactites and stalagmites. This theme park also features a crafts village, traditional dancing and artisans blowing glass, creating pottery and weaving colorful textiles. MCCS Tours+ offers regular tours; visit www.okinawa.usmc-mccs.org/tours for the latest information and tour dates.

YUINCHI HOTEL NANJO RESORT

Yuinchi is located in southern Okinawa and is a great destination to cool off the kids after a visit to Gyokusendo Cave and Okinawa World. The indoor pool offers lap swimming, but the outdoor pools are where most of the fun is to be found. The outdoor pool facility is quite extensive with a double-barrel waterslide emptying into a cool splash at the bottom. There is also a flowing pool for those that wish to be gently pushed around for a few laps with minimal effort. Yuinchi Hotel Nanjo Resort also features an *onsen* (natural hot spring) where you can relax in ancient healing waters from geological formations that are millions upon millions of years old.

OUTER ISLANDS

Many of the outer islands offer resort hotels, camping or the Japanese-style *minshuku* (family inns)—the Japanese equivalent of a boarding house furnished with tatami mats and futons.



KERAMA ISLANDS

One of the most popular areas for diving in the prefecture is in the waters surrounding the Kerama Islands. The Keramas are a string of more than 20 inhabited and uninhabited islands about 12 miles west of Okinawa, accessible via ferry from Naha Tomari Port. The two most-visited islands are Zamami and Tokashiki—both well-known for their abundance of coral, beautiful beaches and marine leisure activities. The waters off the coast of the Kerama Islands are also whale-watching hotspots. Zamami Island's whale-watching season peaks roughly from early February through April.

KUDAKA ISLAND

Kudaka is a tiny island with a circumference of only around 8 km. However, this tiny isle is the most sacred island in the prefecture. This is mostly because, according to folklore, Kudaka was believed to not only be the first Ryukyu Island the goddess Amamikiyo created, but one she created to mirror the beauty of heaven. To this day, certain parts of the island are forbidden to men while others can only be entered by the highest-ranking *noro* (priestesses). In the center of the island lies a circular clearing where it is believed the gods subsequently descended. Not all areas of Kudaka are forbidden, however, and many areas are a different kind of “heaven on earth.” After a 15-minute ride on an express ferry, visitors can either choose to rent a bicycle (a wise choice) or hike to one of several beautiful beaches.

A long straight dirt road that leads to the other side of the isle called Ka-beeru offers a good warm-up with a breathtaking view for finishers. From

there, travelers can leisurely pedal (or walk) back toward the port, stopping at Uppama Beach (which still has star sand), Shimaashi Beach, Ishikihama, Tachihama, Ichajikihama and many more beaches.

SESOKO ISLAND

Sesoko Island is a beautiful and quiet getaway located on the northwestern part of Okinawa, just north of Nago. This tiny islet is connected to Okinawa by a bridge from the Motobu Peninsula, near Motobu Port. Although tiny, Sesoko is a mecca for activities such as scuba diving, snorkeling, swimming, and other watersports. The water becomes very shallow at low tide, making it enjoyable for beachcombers as well. Sesoko is also home to Hilton Okinawa Sesoko Resort, which features world-class cuisine, indoor and outdoor pools, beautiful ocean views and even pet-friendly accommodations.

IE ISLAND

Ie Island sits in the East China Sea, just a few miles west of the Motobu Peninsula. Ie was the scene of intense fighting during WWII. Ie Island is also the site of the Ernie Pyle Monument, honoring the American war correspondent who lost his life during WWII. Mount Gusuku is another popular tourist attraction. A staircase/trail leads the surefooted on a 15-minute climb to the top of the hill. The Youth Excursion Village campgrounds are located on a beautiful beach on the southeast tip of the island. Visitors can enjoy the beach, picnic grounds and large playground for a small fee.

YORON ISLAND

The southernmost of the Amami Islands, Yoron is adorned with beautiful beaches, including Crystal Beach, which is really a sandbar visible only at low tide. Watersports and Pricia Resort with its greek-like design also attract visitors to Yoron Island. The island's folk village is perched on a cliff overlooking the southwest side of the island with views of the rugged coastline.

IZENA & IHEYA ISLANDS

Located 23km northwest of Hedo Point, Iheya Island is mostly unpopulated. With very little tourist facilities, Iheya is largely unspoiled. Off the coast, you'll find dense and healthy reefs, turtles, schools of fish and even pilot whales and dolphins.

Just south of Iheya is Izena Island. Also known for its natural beauty, Izena is mostly known as the birthplace of King Sho En, the reigning monarch of the Ryukyu Kingdom during the 14th century.

IRIOMOTE & TAKETOMI ISLANDS

Ishigaki is the jumping-off point to other islands, including Iriomote and Taketomi. Iriomote is noted for its wildlife and vast jungles and is considered the most untamed part of Japan. Taketomi Island has been designated a Japanese National Treasure for its abundance of well-maintained traditional homes.



Final Fridays at...
Habu Pit



ENJOY COMPLIMENTARY FOOD,
A COASTAL VIEW AND
GOOD TIMES IN THE
SNCO LOUNGE!

LAST FRIDAY OF THE MONTH

5-7 P.M.

636-3081

www.okinawa.usmc-mccs.org/habupit

MC²CS
MARINE CORPS COMMUNITY SERVICES



MIYAKO ISLAND

The Miyako Island chain is well-known for their scenic sandy beaches and crystal-clear waters. Miyako is the primary island of the chain and is home to several tourist destinations, including the Ueno German Culture Village.



KUME ISLAND

Although it isn't visible from Okinawa, Kume Island is very close—only an hour and 45 minutes away from Naha's Tomari Port. The island remained relatively untouched during the WWII Battle of Okinawa, which makes it a great place for seeing pre-Shuri Kingdom architecture including two castles—Uegusuku and Gushikawa—and the Uezu House, which was built in 1726.

Uezu House's walls are made of coral stone, and 300-year-old fukugi trees stand inside its courts. Another of Kume's notable sights is the interesting natural phenomenon called *tatami-ishi*. Over 3,000 square meters of these mat-like stones cover the shoreline. The stones received their name from Japanese tatami mats and have a pattern similar to that of a tortoise shell.

ISHIGAKI ISLAND

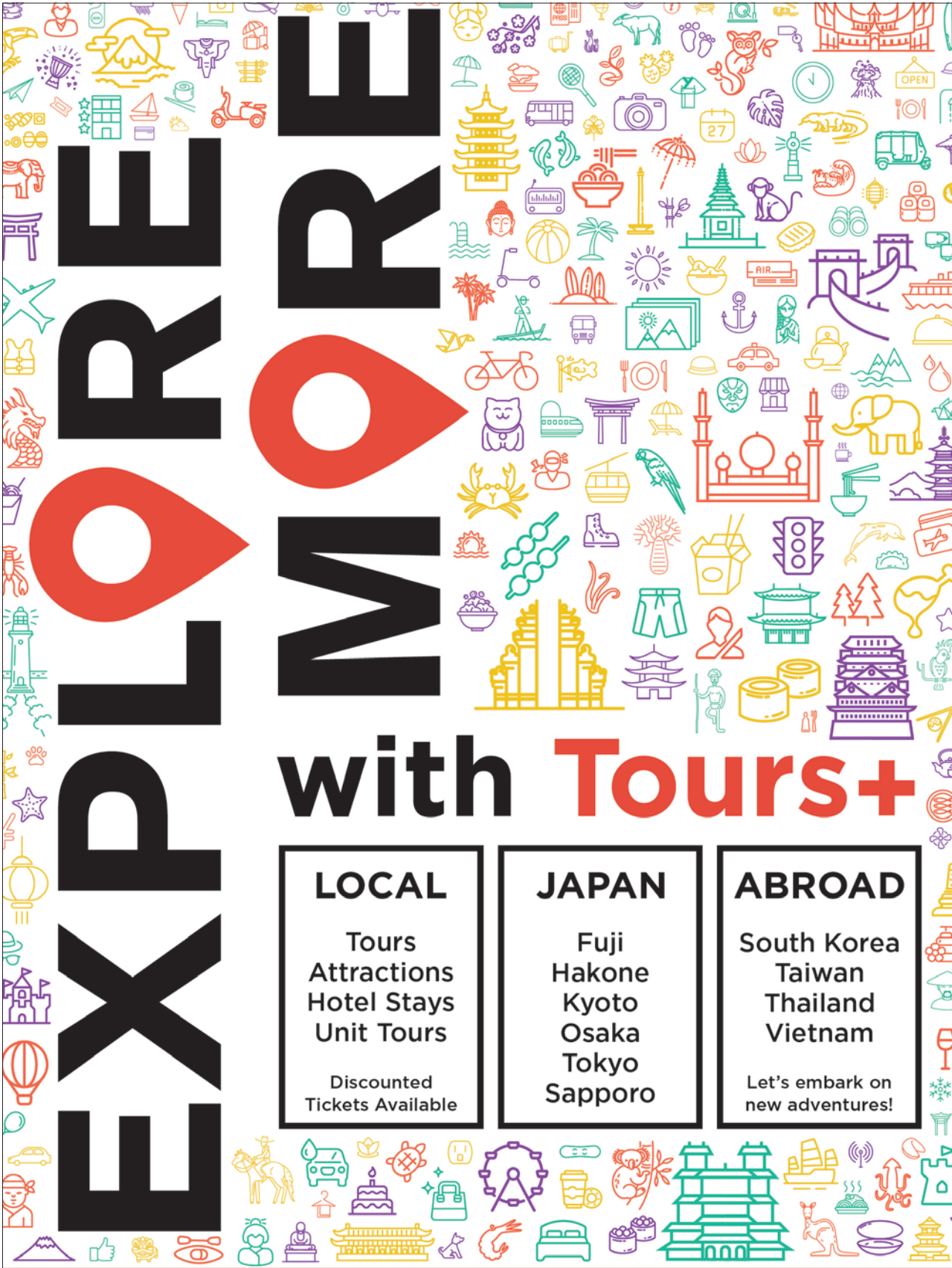
Ishigaki Island is a short 45-minute flight (or a lengthy 14-hour ferryboat ride) from Naha. Ishigaki is the principal island in the Yaeyama chain, lying 429 miles southwest of Okinawa. This charming island has many old streets, houses and temples for exploration and offers a plentiful assortment of restaurants, hotels and shopping for tourists. Kabira Bay is home to the Club Med resort, as well as the oyster beds where Okinawa's rare black pearls are cultivated.

IKEMA, SHIMOJI & IRABU ISLANDS

The 4,675-foot Ikema-Okashi Bridge links Miyako with Ikema, a bucolic island where the women farm and the men fish or work in a seafood processing plant. A new bridge links Miyako and Irabu Islands. Shimoji and Irabu Islands sit side-by-side and are connected at several locations.

YONAGUNI ISLAND

As part of the Okinawa Prefecture, Yonaguni is the tip of the tail of islands that extends south from Okinawa to Taiwan. This spectacular island is fringed with cliffs that drop sharply into the sea. To visit, you can catch a flight to Ishigaki with a connection to Yonaguni.



EXPLORE

LOVE

with Tours+

LOCAL

Tours
Attractions
Hotel Stays
Unit Tours

Discounted
Tickets Available

JAPAN

Fuji
Hakone
Kyoto
Osaka
Tokyo
Sapporo

ABROAD

South Korea
Taiwan
Thailand
Vietnam

Let's embark on
new adventures!

PHONE NUMBERS

MOTOBU PORT TO IE ISLAND

098-047-3940 | some English

TOMARI PORT TO KERAMA ISLANDS

TOKASHIKI

098-868-7541 | some English

ZAMAMI/AKA

098-868-4567 | some English

TOMARI PORT TO KUME ISLAND

098-868-2686 | some English

NAHA PORT TO MIYAKO ISLANDS

098-868-1980 | Japanese only

*Best to contact an English-speaking travel agency.

NAHA PORT TO YAEYAMA ISLANDS (VIA ISHIGAKI)

098-868-1980 | Japanese only

*Many choose to fly to Ishigaki, then take a ferry to one of its sister islands.

FERRIES TO TAKETOMI FROM ISHIGAKI

TAKETOMI

098-082-5010 | some English

IRIOMOTE

098-082-5010 | some English

YONAGUNI

098-082-4962 | Japanese only

*Best to contact an English-speaking travel agency.

HATERUMA

098-083-6055 | Japanese only

*Best to contact an English-speaking travel agency.

ISLAND HOPPING

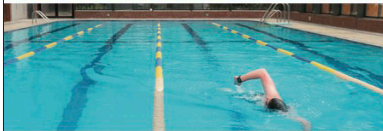
The smaller islands of the prefecture are famous nationwide for their unspoiled natural beauty and some of the most laid-back people on Earth. And while most are accessible by ferry, they are made even more accessible and convenient vacation destinations with a short hop out of Naha Airport—via Okinawa's very own airline Japan Transocean Air (JTA, for short). Visit Japan Transocean Air online at en.jta-okinawa.com.

Ferries bound for Aguni, Daito, Tokashiki, Kume, Tonaki, Zamami and Aka Islands depart from Naha's Tomari Port. The Minna and Ie Island ferries operate out of Motobu Port. Ferries bound for Izena, Yoron and Iheya Islands depart from Motobu's Unten Port. The ferry bound for Kudaka Island operates out of Chinen Village's Azama Port and Naha Port. Lastly, Ishigaki Port is home to vessels that make runs to Hateruma, Iriomote, Taketomi and Yonaguni Islands. For updates on ferry schedules, call the Okinawa Convention & Visitors Bureau at 098-859-6123.



BEST MILITARY RESORT

Conveniently located in Seoul on USAG Yongsan



SPACIOUS GUEST ROOMS

Our American-style guestrooms and suites make a welcoming home base for all your Seoul adventures. Whether it's a short staycation, or a long stay, you will find the best deals for all of our rooms on our website.

DINING & LOUNGE

In many ways, dining at Dragon Hill Lodge is an event itself. Our restaurants and lounge celebrate American favorites with inspired flair, scratch-made quality, craft brews, spirits and exceptional service.

HEALTH AND WELLNESS CENTER

Enjoy complimentary use of the 24-hour POiNT Health and Wellness Center. The POiNT is equipped with the latest cardio and strength equipment for a complete workout, locker rooms with steam & dry saunas and jacuzzi.

SERVING THOSE WHO SERVE

Our resort is open to U.S. Military Service Members, Families, Retirees, DoD Civilians, and Purple Heart and Disabled Veterans under the Equal Access Act of 2018. Visit our website for eligibility requirements.



SPECIAL EVENTS

You'll find special holiday events and happenings year-around at Dragon Hill Lodge. You never know what's in store, but you can depend on it being family-friendly fun that doesn't break the bank.

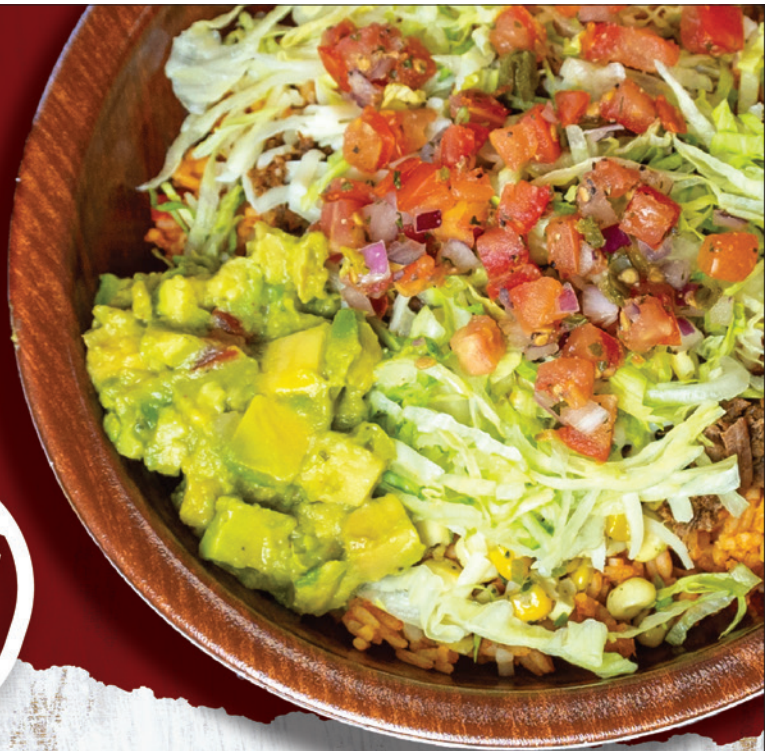


www.DragonHillLodge.com

 reservations@DragonHillLodge.com

DSN: 315-738-2222

TEL: 02-790-0016 EXT.1



CUSTOMIZE
Your
CRAVING



CAMP FOSTER | MCAS FUTENMA | CAMP SCHWAB



SEXUAL ASSAULT PREVENTION & RESPONSE

Camp Foster, Bldg 5677 (2nd Deck)

DoD Safe Helpline: **1-877-995-5247**

MCB Camp Butler 24/7 Support line: **645-HOPE**

Cell Phone: **098-970-4673**

safehelpline.org



MARINE & Family
Sexual Assault Prevention
and Response



GET A JUMP ON FUN



BOUNCERS and MORE FOR RENT



645-5828 | 098-970-5828

ON-BASE DELIVERY AVAILABLE!

WWW.OKINAWA.USMC-MCCS.ORG/BOUNCERS

MCCS
MARINE CORPS
COMMUNITY
SERVICES

MCCS

conducts weekly sales of excess NAF property

WHEN

Wednesdays
8 a.m.-3 p.m.*

WHERE

Warehouse 5600
Camp Foster



OPEN TO SOFA-STATUS PERSONNEL AND RETIREES FROM 8 A.M. TO 3 P.M.

ALL OTHER BASE EMPLOYEES AND AUTHORIZED GUESTS ARE ALLOWED TO SHOP FROM 11:30 A.M. TO 3 P.M.



FOR MORE INFORMATION PLEASE CALL MCCS SUPPLY AT
645-3954 (FROM OFF-BASE/MOBILE PHONE: 098-970-3954).

MCCS
MARINE CORPS
COMMUNITY
SERVICES

AD INDEX

AUTOMOTIVE/RENTAL CAR

ENEOS Gas Station Mihama.....	38
Johnny's Used Cars.....	208
MCCS Fuji Mt. Motors.....	120
Miyagi Salvage.....	36
Pit Stop.....	36
Toma's Garage.....	42
Tread Tire Shop.....	14-15
Typhoon Motors.....	44
Typhoon Motors.....	68
Typhoon Motors Auto Detailing.....	196
Wheel Garage.....	66

CHURCHES

All Souls Anglican Episcopal Church.....	86
Koza Baptist Church.....	82
Maranatha Baptist Church.....	220
Neighborhood Church.....	82

COMMUNICATIONS

MCCS eNewsletter.....	24
Mediatti Broadband.....	
Communications.....	30
S Agent (High-Speed Internet).....	32
Sunny-Net.....	90

HEALTH /FITNESS/CLINICS

Excellence Gymnastics Academy.....	106
Marina Dental Clinic.....	24
MCCS Youth Sports Coaching.....	102
Run Design Okinawa.....	86
Rycom Dental Clinic.....	154
Taiyo FREE Ride Program.....	176
Taiyo Golf Adventures.....	108
Taiyo Ladies Golf.....	102
Tomo Dental Clinic.....	100
Yukuidoki Traditional Thai Massage.....	177

PETS/VETERINARIAN

Noah Animal Hospital.....	20
Okinawa International.....	
Animal Hospital.....	110
Pet Memorial Service Magokoro.....	18
Puppy Luv.....	18

PLASTIC SURGERY

KC Plastic Surgery.....	2
Tattoo Shop Crystal.....	68

RESTAURANTS/CAFES/FOOD/ ENTERTAINMENT

58 Sweets.....	168
Bonsai Coffee Company.....	26
Chatan Café halihali.....	174
EL RINCON DE MEXICOLA.....	3
Esparza's Tacos & Coffee.....	74
Final Fridays at Habu Pit.....	212
Foremost Blue Seal Ice Cream.....	4
Kinser Surfside Breakfast.....	200
LifeJuice Café.....	74
MCCS Breakfasts & Brunches.....	76
MCCS Food Trucks.....	72
MCCS Taste of Home.....	158

Peacock Chinese Restaurant.....	24
Sam's Restaurant Group.....	10
Shabu-Shabu House Tokyuhote.....	144
Shisa Pizza.....	206
Sumo Burrito.....	217
Sushi on La Cienega.....	80
TERRA International Fusion.....	114
Wagyu Restaurant Nobu.....	172
Yakiniku GOEN.....	88
Yakiniku Yumemaru.....	132

RETAIL/SHOPPING/FURNITURE/ HOUSEHOLD GOODS

Chikyuu Zakka Warehouse.....	
(Asian Décor).....	177
Depot Island.....	92-95
Factory Gear (Tools).....	104
Lapin Furniture/Flowers/Hotel.....	62
Manga Souko.....	
(Second-Hand Store).....	34-35
MCCS Arts and Crafts Centers.....	186
MCCS Bouncer Rentals.....	218
MCCS Gift Cards.....	70
MCCS Warehouse Sales.....	218
PARCO City Mall.....	46-47
Rosa Rosae (Flower Shop).....	64
Table Dog (Gaming/Collectables).....	180
Taiyo Golf Club Trade-in/Trade-up.....	108
Tsunami Scuba.....	112

SCHOOLS/EDUCATION/DAYCARE

Baby 123.....	70
Busy Bee School.....	28-29
MCCS Education Centers.....	124
Okinawa Christian School.....	
International.....	126
Santa Monica Intl. School / Zion.....	
Christian Academy Intl.....	184-185
University of Maryland.....	
Global Campus.....	122

SERVICES/ORGANIZATIONS

AFSPA.....	C3
Army MWR.....	152
ICE Program.....	177
MCCS Advertising & Sponsorship.....	196
MCCS Behavioral Health.....	144
MCCS Community.....	
Counseling Program.....	84
MCCS Entertainment.....	204
MCCS Family Advocacy Program.....	138
MCCS HRO.....	20
MCCS Japanese Culture.....	
Awareness & Adaptation.....	78
MCCS Lending Locker.....	168
MCCS Libraries.....	182
MCCS LINKS Foundations.....	142
MCCS New Parent.....	
Support Program.....	134
MCCS Pre-Marital Seminars.....	142
MCCS SACP.....	140
MCCS SAPR.....	217
MCCS Single Marine Program.....	202

MCCS Sober Drive.....	169
MCCS Volunteer Program.....	86
Military/Veterans Crisis Line.....	32
Navy MWR.....	150
NFCU Community Bank.....	52
Not One Drop.....	48
OnePayment.....	186
Stay Connected with MCCS.....	22

TRAVEL/HOTELS/LEISURE

ANA InterContinental.....	
Manza Beach Resort.....	166
ASMUI Spiritual Hikes.....	54
Cave Okinawa.....	178
DMM Kariyushi Aquarium.....	192
DOT Hotel My Beach Resort.....	98
Dragon Hill Lodge.....	216
DSH Resort.....	118
Eagle Lodge.....	186
Good Point Marine.....	100
Grand Hotel Ginowan.....	174
Grand Mercure Okinawa.....	
Cape Zanpa Resort.....	40
Hotel Management Japan.....	198-199
Japan Transocean Air.....	156
Junglia Okinawa (Theme Park).....	1
Kanucha Resort Okinawa.....	12
Kin Sunrise Beach.....	162
Laguna Garden Hotel.....	48
MCCS Fuji Mt. View Inn.....	120
MCCS Tours+.....	214
Moon Ocean.....	
Hotel & Resorts.....	Inside Cover (C2)
NEO Park Okinawa.....	154
Ocean Expo Park.....	164
Okinawa Kingyo Museum.....	194
Okinawa World (Theme Park).....	50
Okinawa Zoo & Museum.....	176
Okuma Recreation Facility.....	6
Ryukyu Orion Hotel.....	190
Southeast Botanical.....	
Gardens.....	Back Cover (C4)
West Marine Dinner Cruises.....	118



MARANATHA BAPTIST CHURCH



*Welcome Home!
Ministering Bible truths to the
U.S. Military, English-speaking
community, and Japanese
nationals on Okinawa since 1968*

Service Times

Sunday School 9:45 A.M.
Sunday Morning 11:00 A.M.
Sunday Evening 6:00 P.M.
Wednesday Evening 7:00 P.M.

Faith Bible Institute
-3 Year Bible College Diploma



Maranatha Baptist Academy
K4- 12th Grade
Abeka Curriculum

4-43-2 Chibana, Okinawa City, Japan 904-2143
For more information, please call (098) 929-2695
visit www.maranathabaptistokinawa.org or
f [maranathabaptistchurchokinawa](https://www.facebook.com/maranathabaptistchurchokinawa)