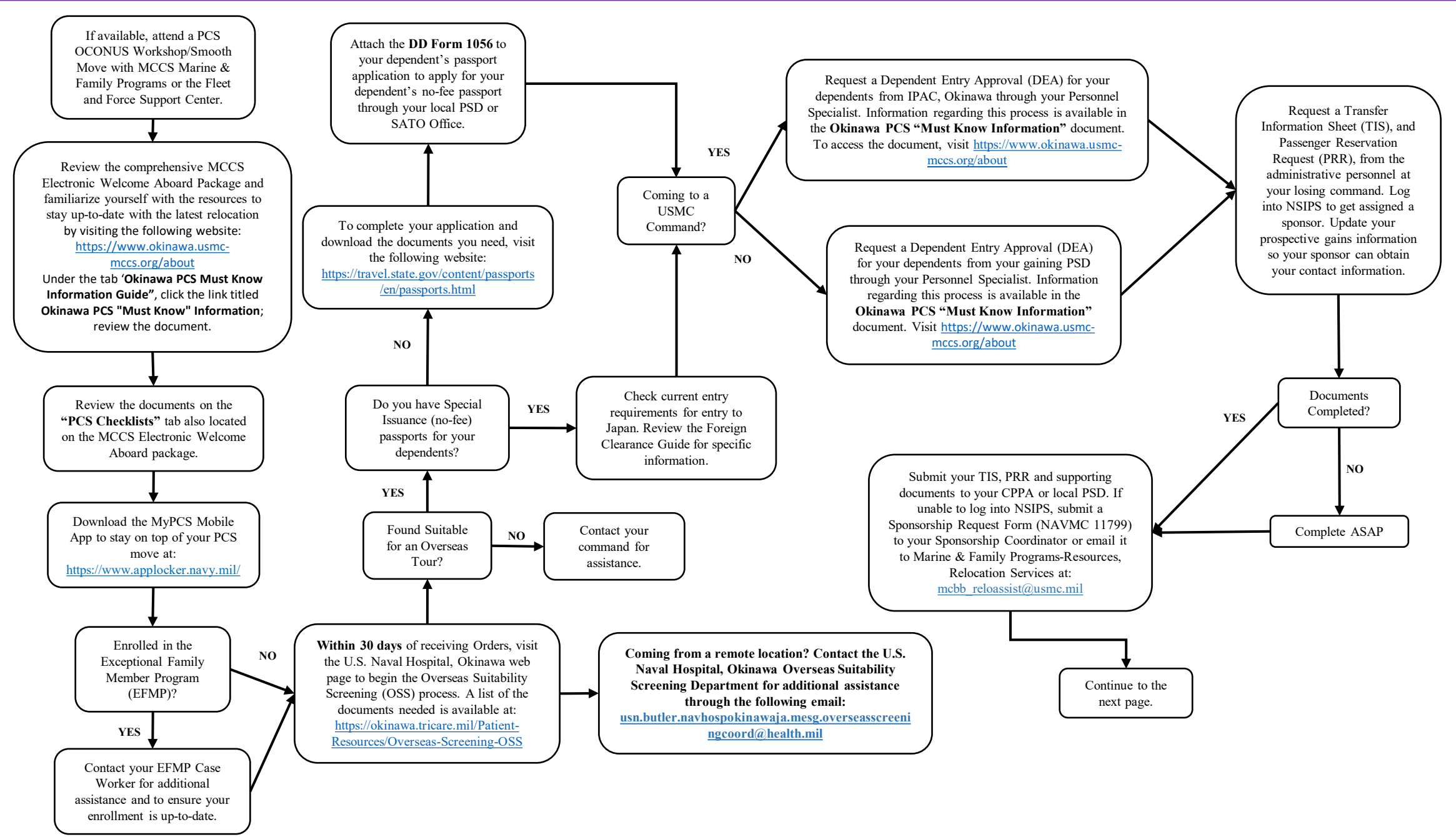


**Once orders are received:**

**Topics Covered:**

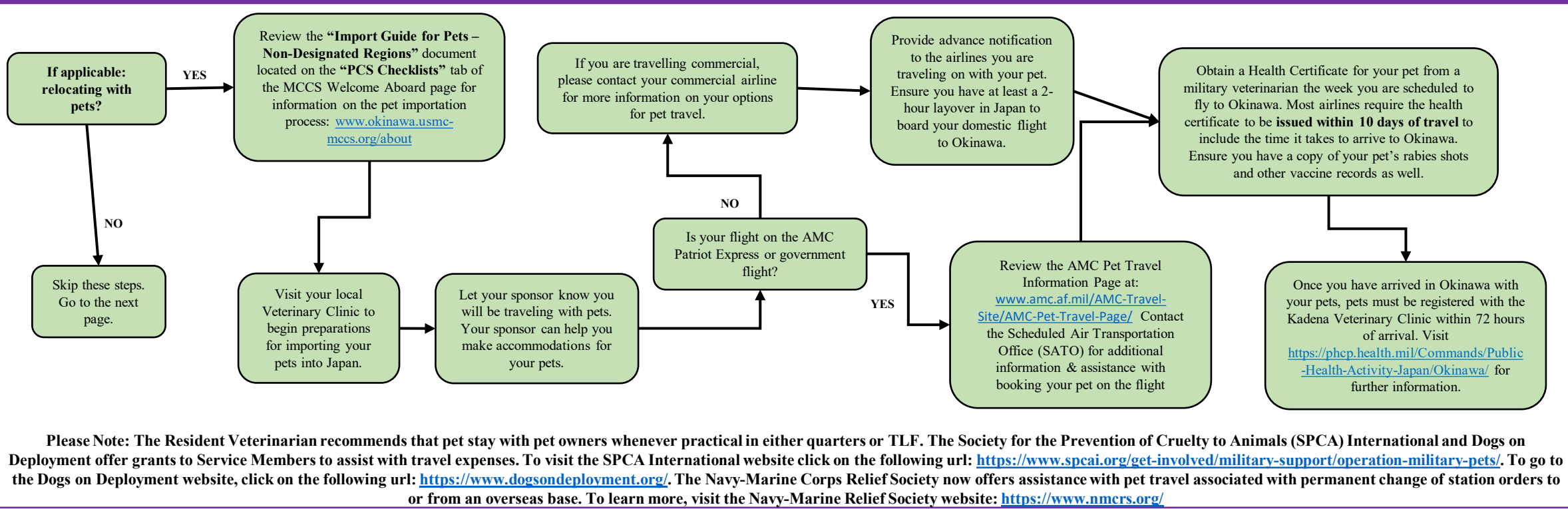
- ❖ Electronic Welcome Aboard Package
- ❖ Overseas Suitability Screening (OSS)
- ❖ Passports
- ❖ Dependent Entry Approval (DEA)
- ❖ Transfer Information Sheet (TIS)
- ❖ Passenger Reservation Request (PRR)
- ❖ Sponsorship Request Form



**Greater than Six Months:**

**Topics Covered:**

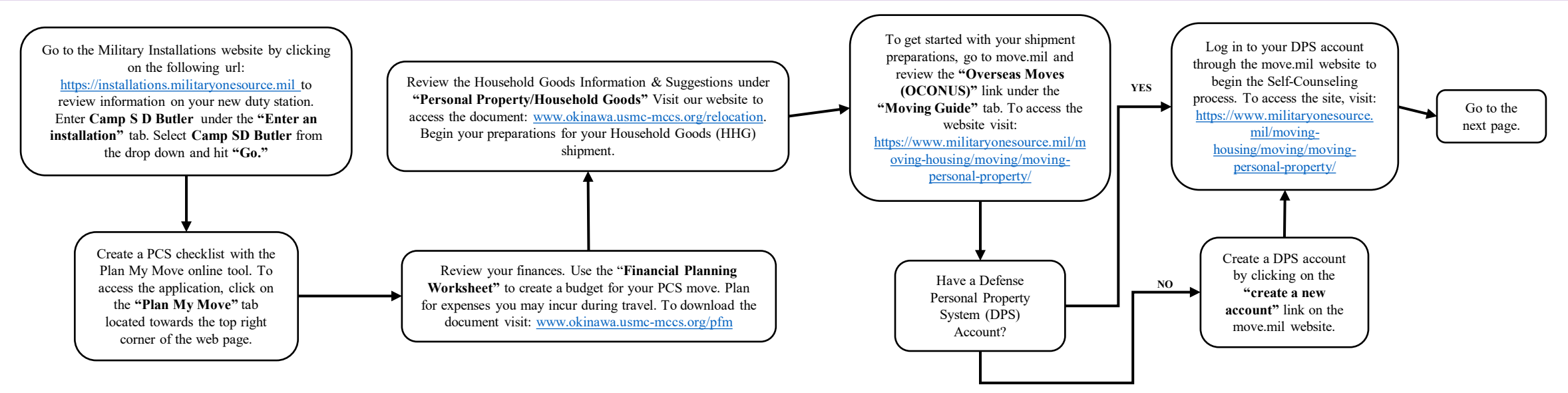
- ❖ Pet Importation



**Six Months:**

**Topics Covered:**

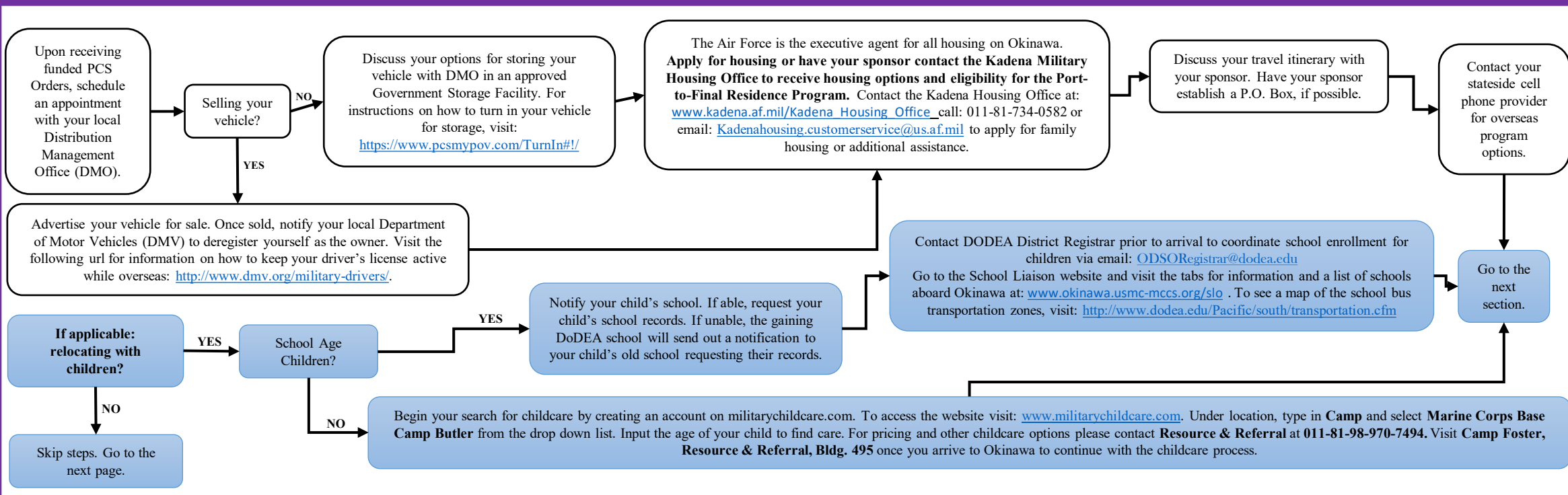
- ❖ Military Installations
- ❖ Plan My Move
- ❖ Financial Worksheet
- ❖ Household Goods Shipment (HHG)



**One to Three Months:**

**Topics Covered:**

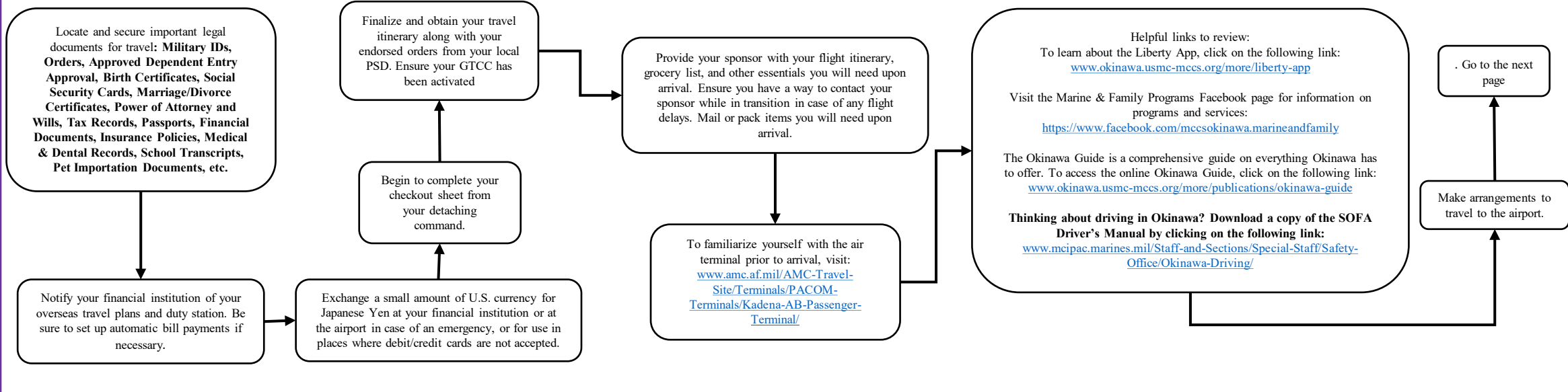
- ❖ Finalizing HHG Shipment
- ❖ Storing Privately Owned Vehicle
- ❖ Housing
- ❖ Sponsor Responsibilities
- ❖ Schools & Childcare



**Less than Thirty Days:**

**Topics Covered:**

- ❖ Important Documents
- ❖ Setting up Finances
- ❖ Checkout Process
- ❖ Sponsor Notification
- ❖ Travel and Arrival
- ❖ Helpful Links



- Arrival:**
- Topics Covered:**
- ❖ Meeting Sponsor
  - ❖ Checking Into Lodging
  - ❖ Checking Into Housing
  - ❖ CFAO Indoc
  - ❖ Newcomers' Orientation
  - ❖ SOFA Driver's License
  - ❖ Check-In

