

MCCS Okinawa, Marine and Family Programs

Permanent Change of Station (PCS) Move to Okinawa for Accompanied
USMC Personnel

MCB Camp S.D. Butler



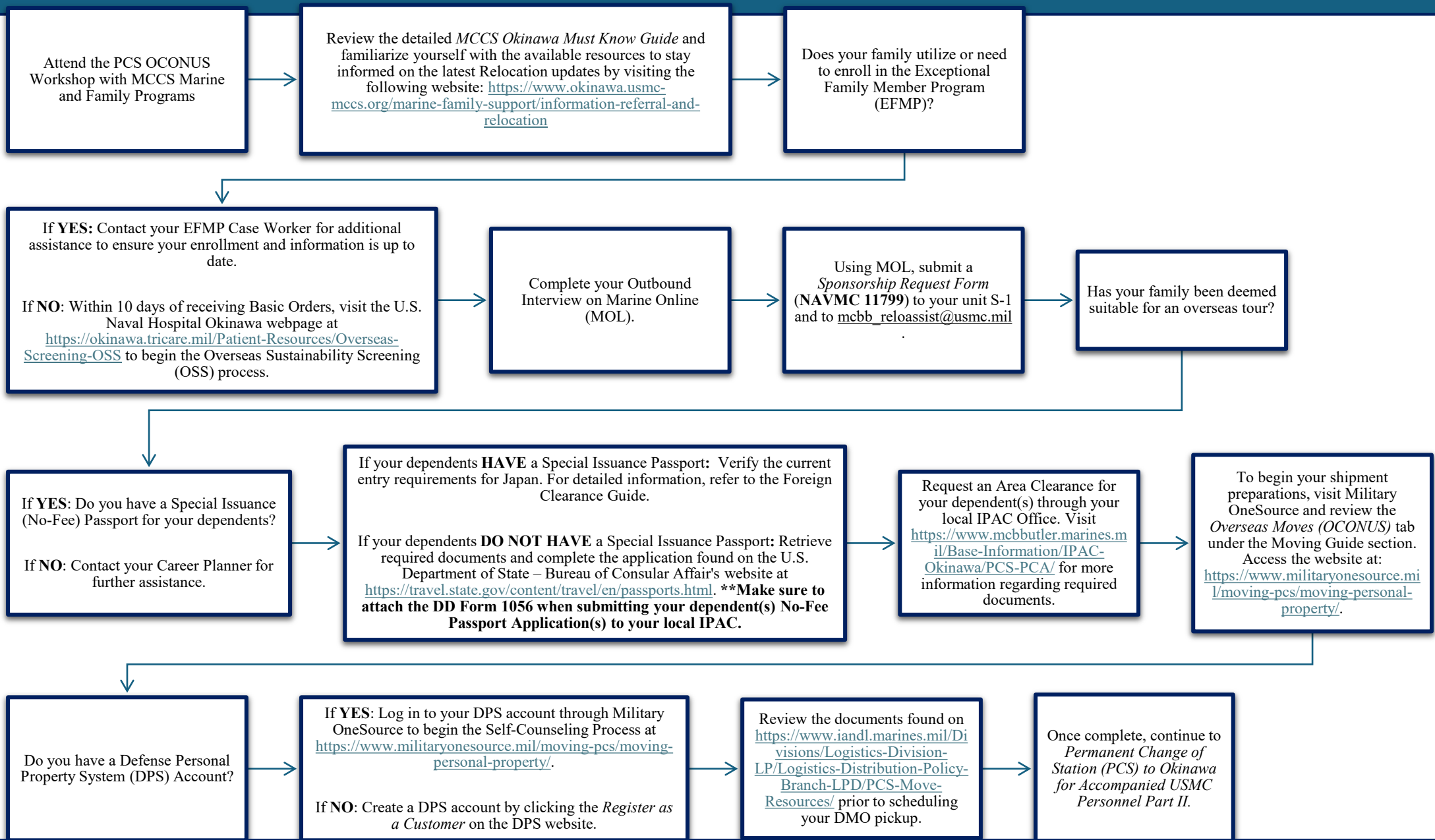
Suggested timeframe to complete Part I is **once you have received your orders.**

Permanent Change of Station (PCS) Move to Okinawa for Accompanied USMC Personnel: Part I



Topics Covered in Permanent Change of Station (PCS) Move to Okinawa for Accompanied USMC Personnel: Part I :

- ❖ Electronic Welcome Aboard Package
- ❖ Overseas Sustainability Screening (OSS)
- ❖ Outbound Interview on Marine Online (MOL)
- ❖ Sponsorship Request Form
- ❖ Area Clearance
- ❖ Passport
- ❖ Household Goods Shipment (HHG)



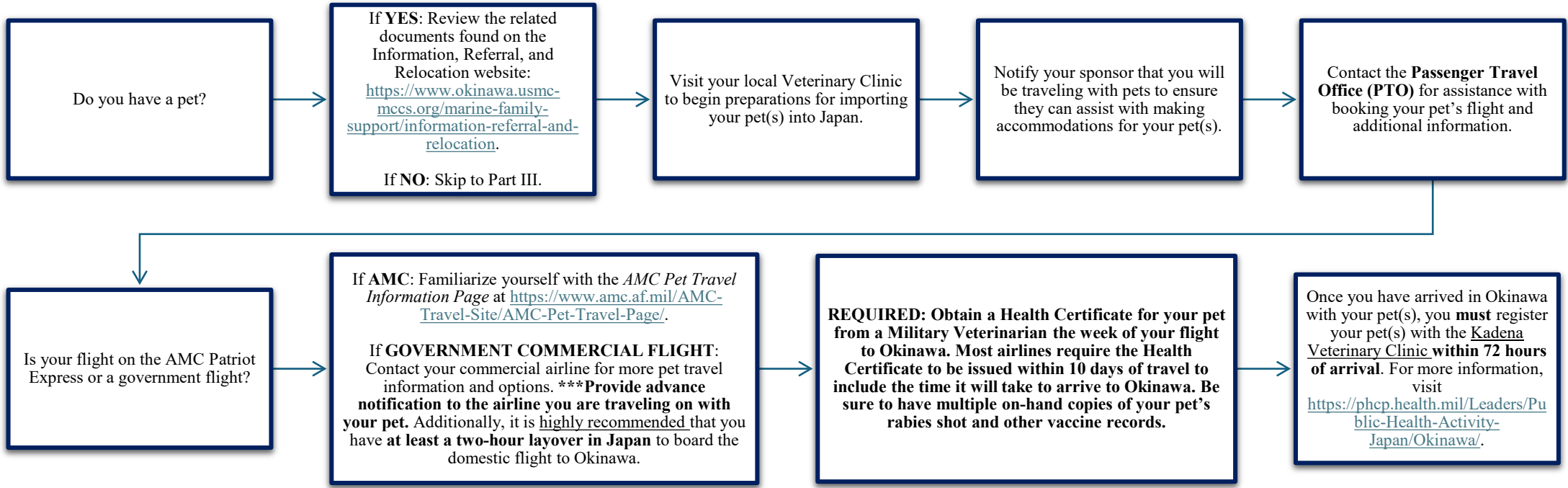
Suggested timeframe to complete Part II is **more than 6 months from arrival date.**

Permanent Change of Station (PCS) Move to Okinawa for Accompanied USMC Personnel: Part II



Topic Covered in Permanent Change of Station (PCS) Move to Okinawa for Accompanied USMC Personnel: Part II :

❖ Pet Information



Please refer to the Joint Travel Regulations and MARADMIN 378/23 – Pet Transportation Entitlement Final Decision for FAQ’s regarding pet transportation allowances.

Please Note: Resident Veterinarian recommends that pets stay with owners whenever practical in either quarters or TLF.

The Society for the Prevention of Cruelty to Animals (SPCA) International <https://www.spcai.org/get-involved/military-support/operation-military-pets/> and Dogs on Deployment <https://www.dogsondeployment.org/apply> offer grants to Service Members to assist with travel expenses.

The Navy-Marine Corps Relief Society (NMCRS) may help with pet travel associated with PCS orders to or from an overseas base. To learn more, visit NMCRS website: <https://www.nmcrs.org/>.

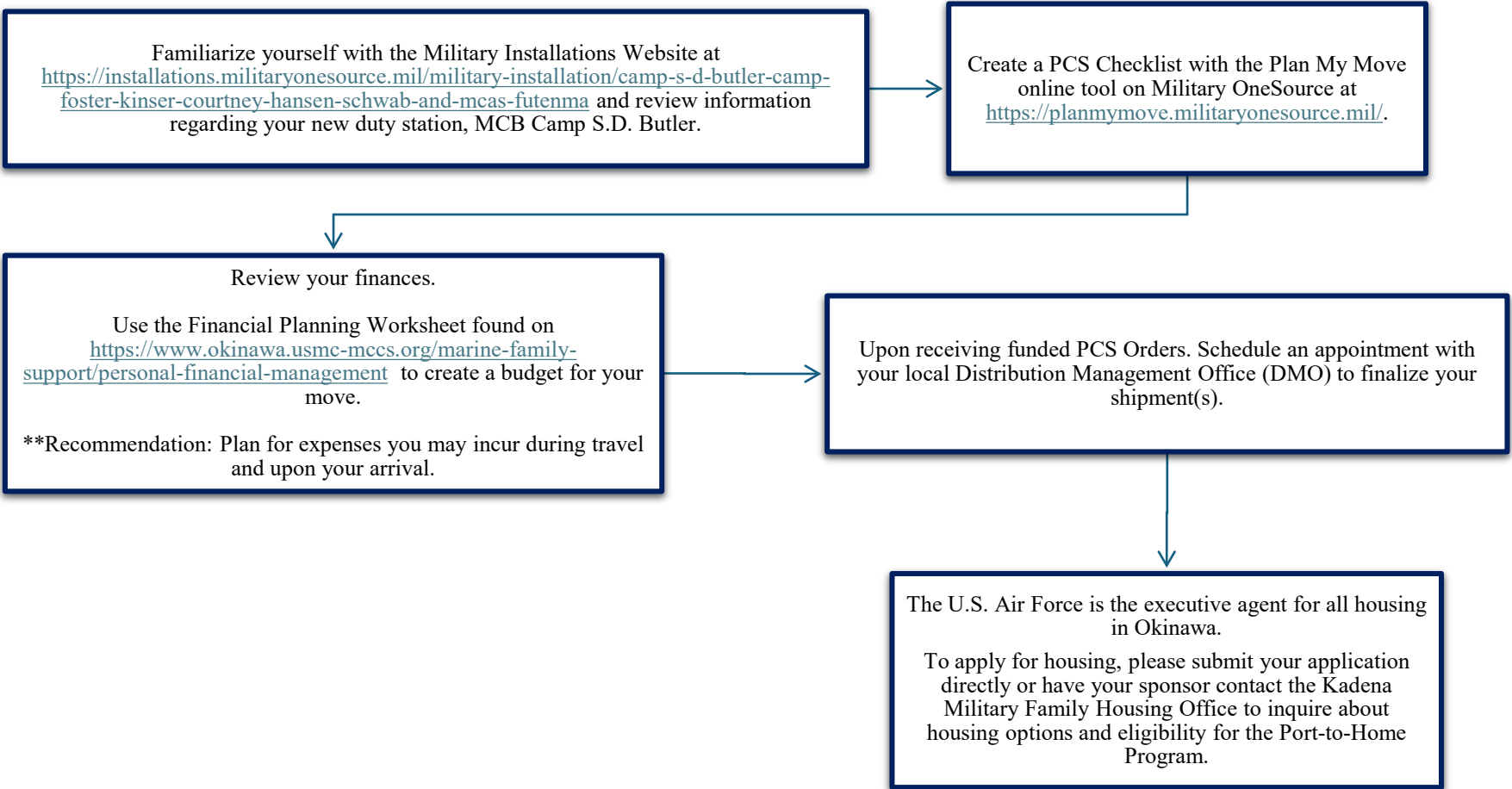
Suggested timeframe to complete Part III is **3 to 6 months from arrival date.**

Permanent Change of Station (PCS) Move to Okinawa for Accompanied USMC Personnel: Part III



Topic Covered in Permanent Change of Station (PCS) Move to Okinawa for Accompanied USMC Personnel: Part III :

- ❖ Military Installations
- ❖ Plan My Move
- ❖ Financial Worksheet
- ❖ Finalizing HHG Shipment
- ❖ Housing



Contact the Kadena Military Family Housing Office:
<https://www.kadena.af.mil/Agencies/Okinawa-Family-Housing/>

Phone (Local): 098-938-1111 / 634-0582
Phone (International): 011-81-98-938-1111 / 634-0582
Phone (DSN): 634-0582

Email: 718ces.cehma.housing@us.af.mil

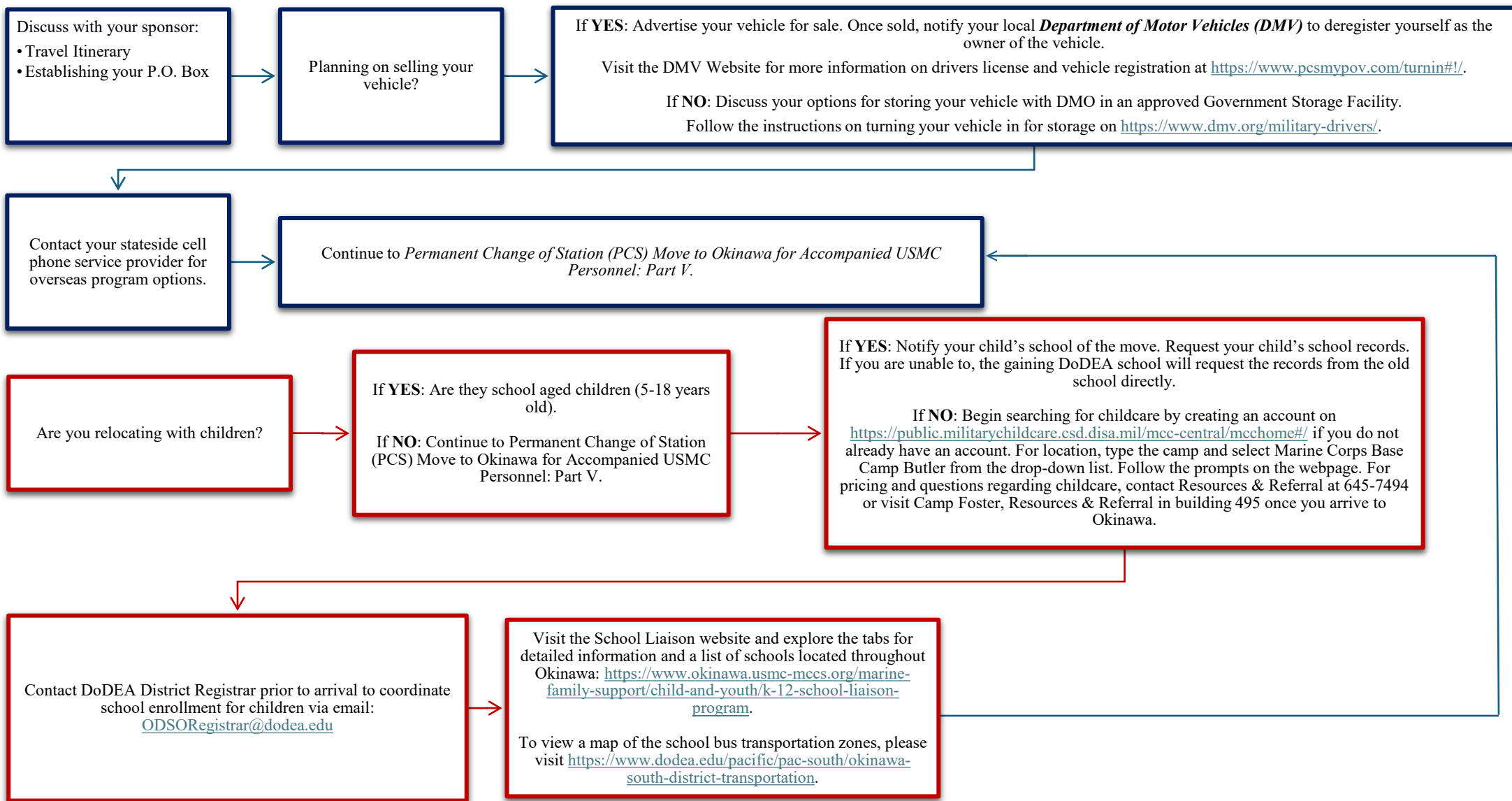


Suggested timeframe to complete Part IV is **1 to 2 months from arrival date.**

Permanent Change of Station (PCS) Move to Okinawa for Accompanied USMC Personnel: Part IV



- Topic Covered in Permanent Change of Station (PCS) Move to Okinawa for Accompanied USMC Personnel: Part IV :
- ❖ Sponsor Responsibilities
 - ❖ School and Childcare
 - ❖ Storing Privately Owned Vehicle (POV)

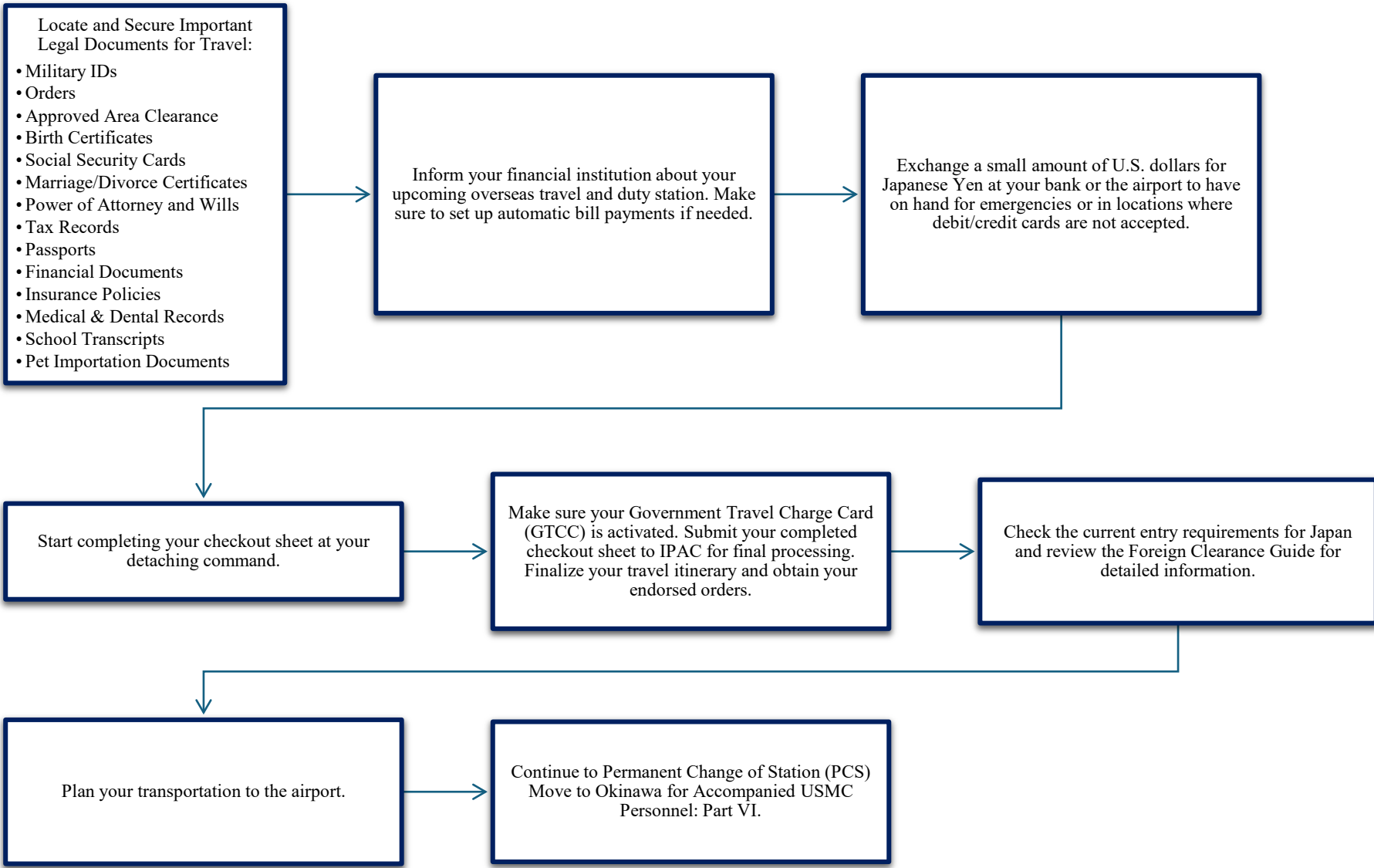


Suggested timeframe to complete Part V is **less than 30 days from arrival.**

Permanent Change of Station (PCS) Move to Okinawa for Accompanied USMC Personnel: Part V



- Topic Covered in Permanent Change of Station (PCS) Move to Okinawa for Accompanied USMC Personnel: Part V :
- ❖ Important Documents
 - ❖ Setting Up Finances
 - ❖ Check-out Process
 - ❖ Sponsor Notification
 - ❖ Travel and Arrival
 - ❖ Helpful Links



Helpful links to review:

Liberty App: www.okinawa.usmc-mccs.org/more/liberty-app

Visit the Marine & Family Programs Facebook page for information on programs and services. Click on the following URL to access the site: <https://www.facebook.com/mccsookinawa.marineandfamily>

The Okinawa Guide: www.okinawa.usmc-mccs.org/more/publications/okinawa-guide

Thinking about driving in Okinawa? Download a copy of the SOFA Driver's Manual by clicking on the following link: www.mcipac.marines.mil/Staff-and-Sections/Special-Staff/Safety-Office/Okinawa-Driving/

Suggested timeframe to complete Part VI is at arrival.

Permanent Change of Station (PCS) Move to Okinawa for Accompanied USMC Personnel: Part VI



- Topic Covered in Permanent Change of Station (PCS) Move to Okinawa for Accompanied USMC Personnel: Part VI :
- ❖ Checking into Housing
 - ❖ Newcomers' Orientation Welcome Aboard
 - ❖ SOFA Driver's License
 - ❖ Checking into your Unit S1 and IPAC



These flowcharts are intended as a general guide and additional resource for inbound personnel to Okinawa. If you have any questions, please contact MCCS Okinawa, Relocation Services
From the US: 011-81-98-970-7494 | From DSN: 645-7494 | Email: mcbb_reloassist@usmc.mil

MCCS Okinawa, Marine and Family Programs

Permanent Change of Station (PCS) Move to Okinawa for
Accompanied USN Personnel

MCB Camp S.D. Butler



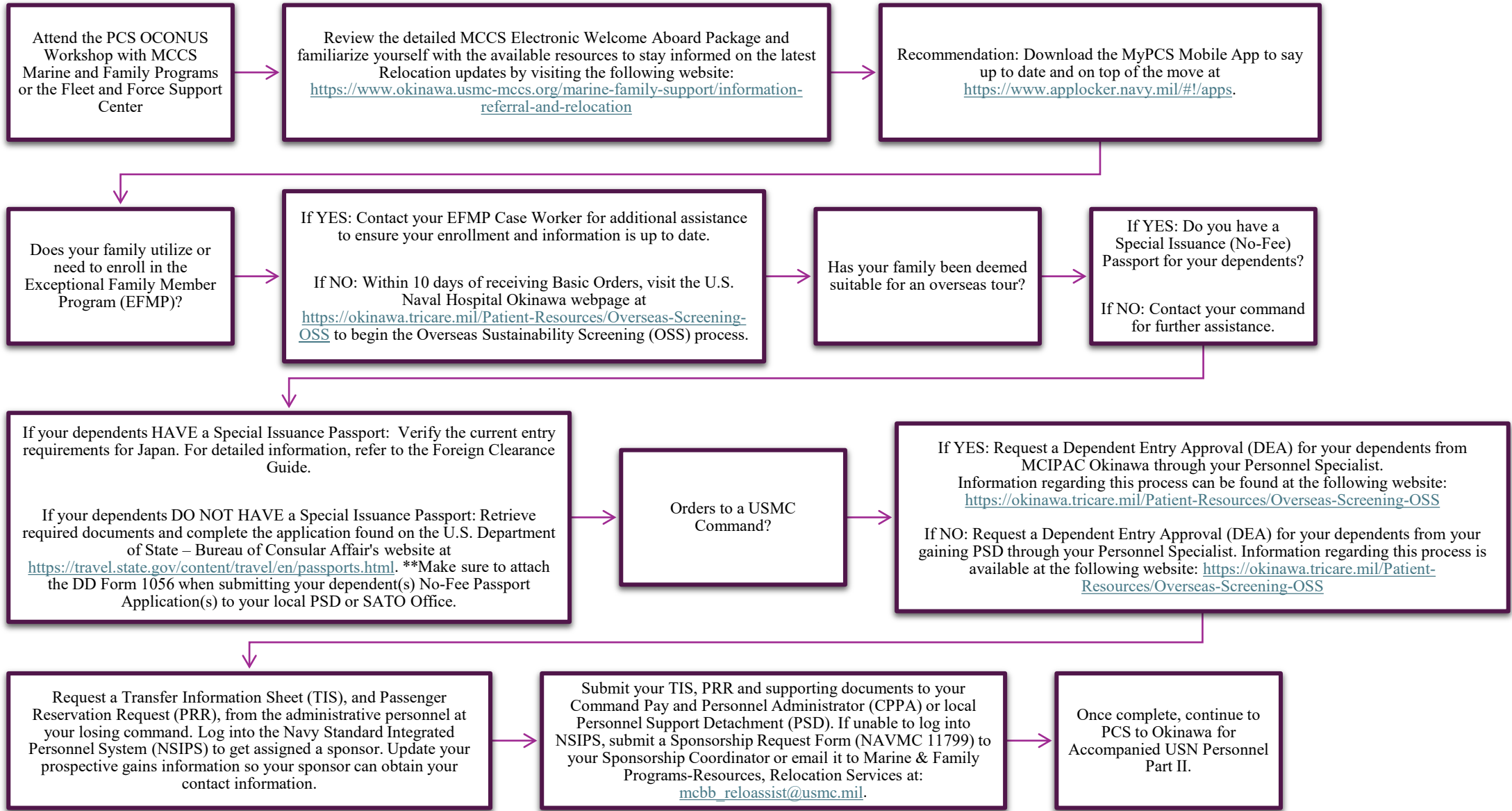
Suggested timeframe to complete Part I is **once you have received your orders.**

Permanent Change of Station (PCS) Move to Okinawa for Accompanied USN Personnel: Part I



Topics Covered in Permanent Change of Station (PCS) Move to Okinawa for Accompanied USMC Personnel: Part I :

- ❖ Electronic Welcome Aboard Package
- ❖ Overseas Sustainability Screening (OSS)
- ❖ Passport
- ❖ Dependent Entry Arrival (DEA)
- ❖ Transfer Information Sheet (TIS)
- ❖ Passenger Reservation Request (PRR)
- ❖ Sponsorship Request Form



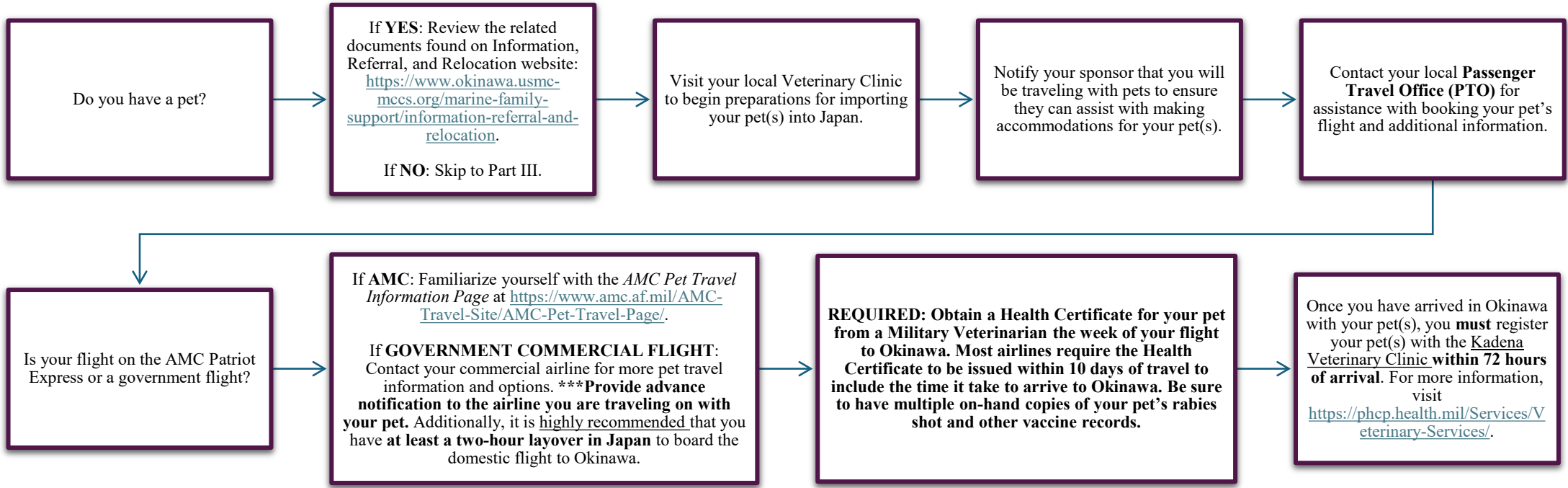
Suggested timeframe to complete Part II is **more than 6 months from arrival date.**

Permanent Change of Station (PCS) Move to Okinawa for Accompanied USN Personnel: Part II



Topic Covered in Permanent Change of Station (PCS) Move to Okinawa for Accompanied USN Personnel: Part II :

❖ Pet Information



Please refer to the Joint Travel Regulations and MARADMIN 378/23 – Pet Transportation Entitlement Final Decision for FAQ’s regarding pet transportation allowances.

Please Note: Resident Veterinarian recommends that pets stay with owners whenever practical in either quarters or TLF.

The Society for the Prevention of Cruelty to Animals (SPCA) International <https://www.spcai.org/get-involved/military-support/operation-military-pets/> and Dogs on Deployment <https://www.dogsondeployment.org/apply> offer grants to Service Members to assist with travel expenses.

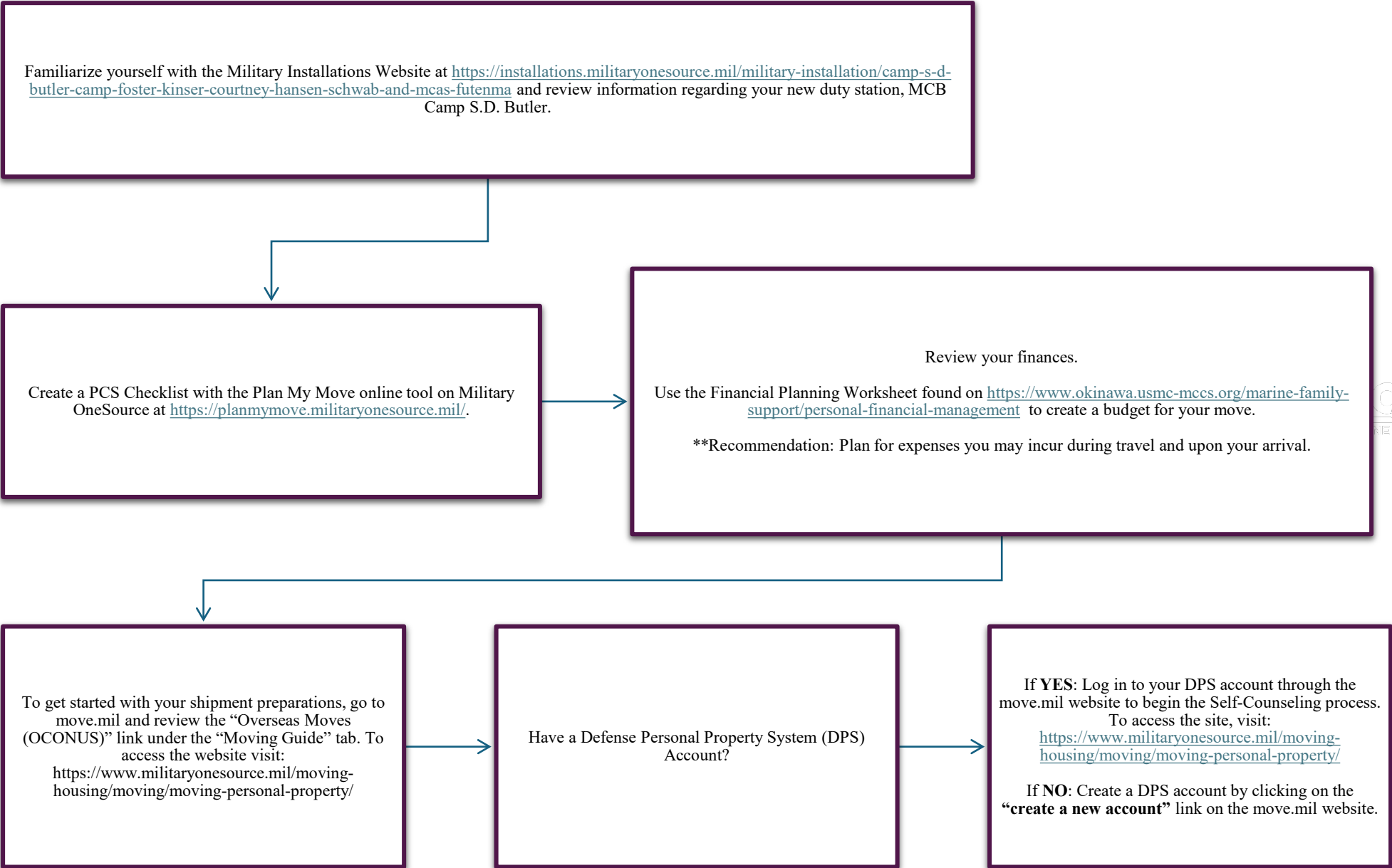
The Navy-Marine Corps Relief Society (NMCRS) may help with pet travel associated with PCS orders to or from an overseas base. To learn more, visit NMCRS website: <https://www.nmcrs.org/>.

Suggested timeframe to complete Part III is **6 months from arrival date.**

Permanent Change of Station (PCS) Move to Okinawa for Accompanied USN Personnel: Part III



- Topic Covered in Permanent Change of Station (PCS) Move to Okinawa for Accompanied USN Personnel: Part III :
- ❖ Military Installations
 - ❖ Plan My Move
 - ❖ Financial Worksheet
 - ❖ Finalizing Household Goods (HHG) Shipment



Suggested timeframe to complete Part IV is **1 to 3 months from arrival date.**

Permanent Change of Station (PCS) Move to Okinawa for Accompanied USN Personnel: Part IV



Topic Covered in Permanent Change of Station (PCS) Move to Okinawa for Accompanied USN Personnel: Part IV :

❖ Finalizing your HHG Shipment

❖ Storing Privately Owned Vehicle

❖ Housing

❖ Sponsor Responsibilities

❖ Schools & Childcare

Contact the Kadena Military Family Housing Office:
<https://www.kadena.af.mil/Agencies/Okinawa-Family-Housing/>

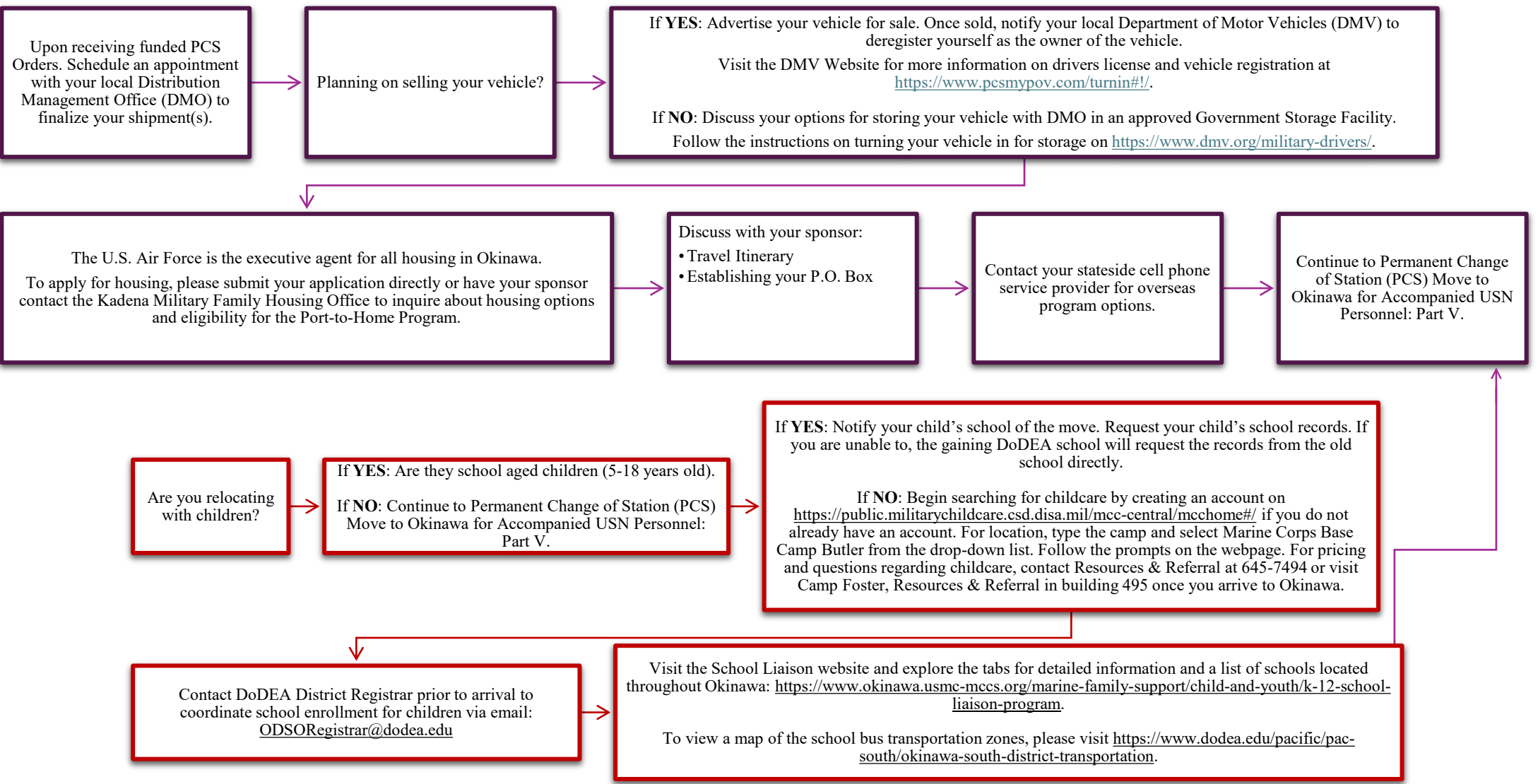
Phone (Local):
098-938-1111 / 634-0582

Phone (International):
011-81-98-938-1111 / 634-0582

Phone (DSN): 634-0582

Email:
718ces.cehma.housing@us.af.mil

Updated: April 2025

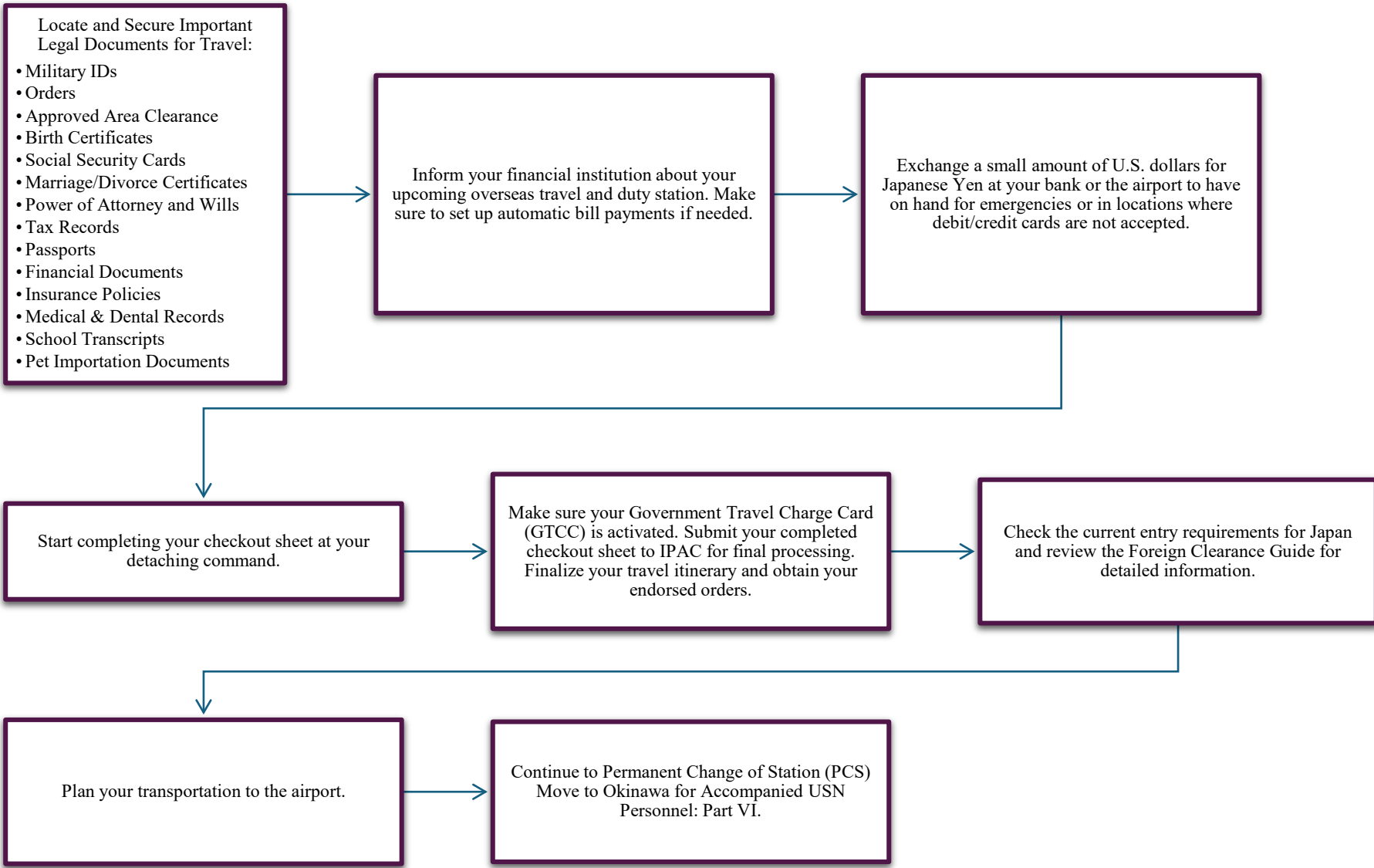


Suggested timeframe to complete Part V is **less than 30 days from arrival.**

Permanent Change of Station (PCS) Move to Okinawa for Accompanied USN Personnel: Part V



- Topic Covered in Permanent Change of Station (PCS) Move to Okinawa for Accompanied USN Personnel: Part V :
- ❖ Important Documents
 - ❖ Setting Up Finances
 - ❖ Check-out Process
 - ❖ Sponsor Notification
 - ❖ Travel and Arrival
 - ❖ Helpful Links



Helpful links to review:

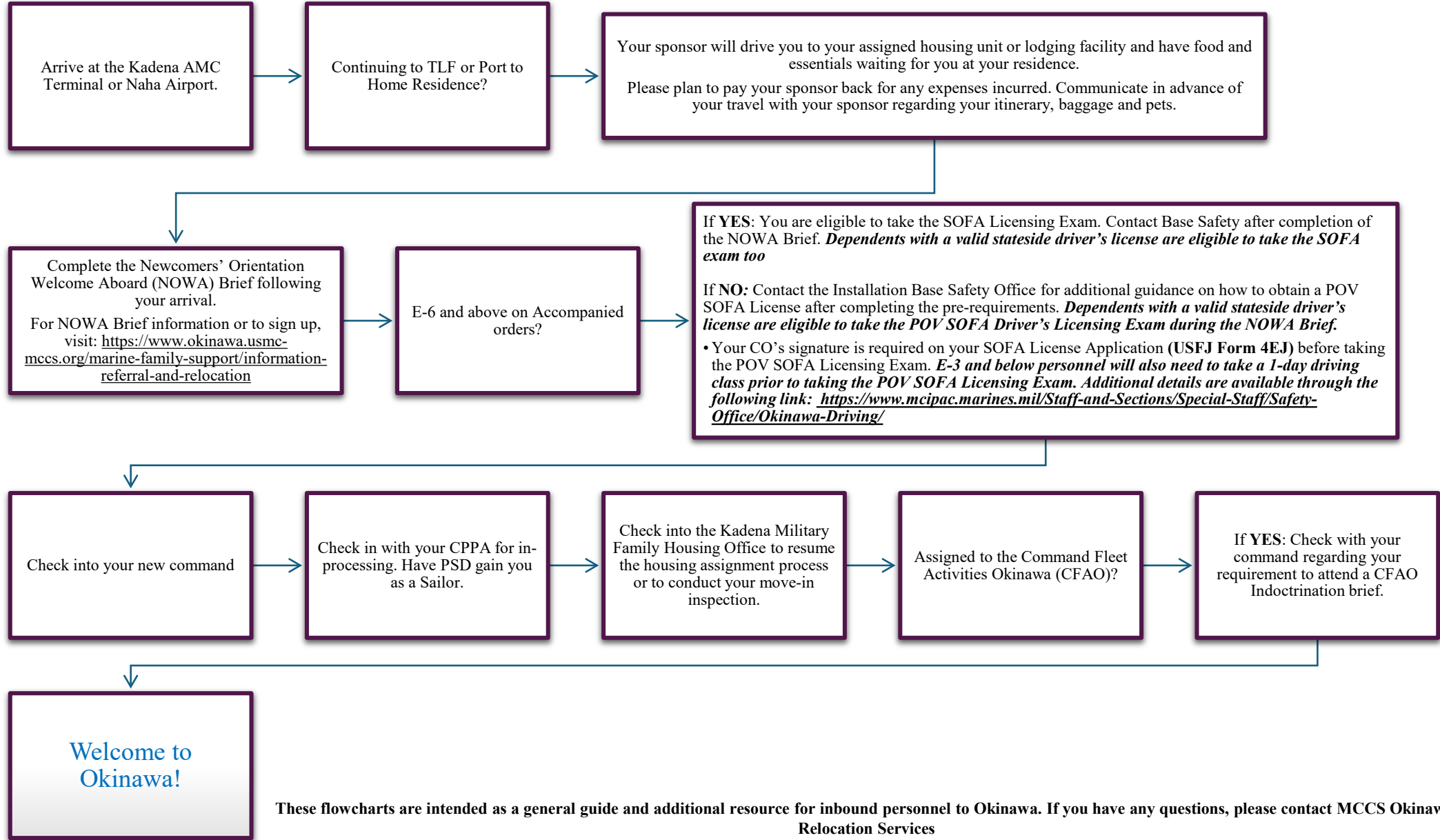
- Liberty App: www.okinawa.usmc-mccs.org/more/liberty-app
- Visit the Marine & Family Programs Facebook page for information on programs and services. Click on the following URL to access the site: <https://www.facebook.com/mccso-kinawa.marineandfamily>
- The Okinawa Guide: www.okinawa.usmc-mccs.org/more/publications/okinawa-guide
- Thinking about driving in Okinawa? Download a copy of the SOFA Driver's Manual by clicking on the following link: www.mcipac.marines.mil/Staff-and-Sections/Special-Staff/Safety-Office/Okinawa-Driving/

Suggested timeframe to complete Part VI is at arrival.

Permanent Change of Station (PCS) Move to Okinawa for Accompanied USN Personnel: Part VI



- ❖ Topic Covered in Permanent Change of Station (PCS) Move to Okinawa for Accompanied USN Personnel: Part VI :
- ❖ Meeting Sponsor
- ❖ Checking Into Lodging
- ❖ Checking Into Housing
- ❖ CFAO Indoctrination
- ❖ Newcomers' Orientation Welcome Aboard Brief
- ❖ POV SOFA Driver's License
- ❖ Checking into your unit



These flowcharts are intended as a general guide and additional resource for inbound personnel to Okinawa. If you have any questions, please contact MCCS Okinawa, Relocation Services

From the US: 011-81-98-970-7494 | From DSN: 645-7494 | Email: mcbb_reloassist@usmc.mil