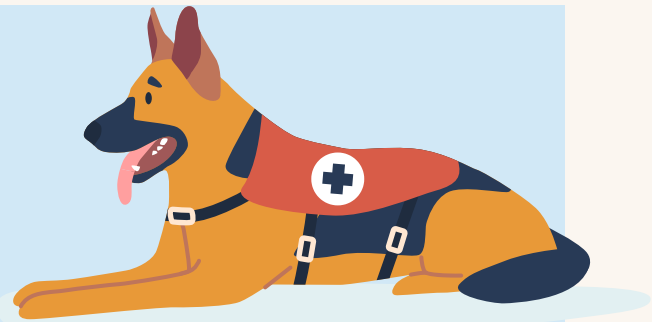
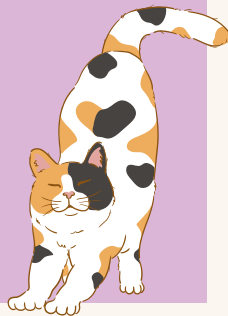


# SERVICE ANIMALS VS THERAPY ANIMALS

Understanding key differences and regulations

## WHAT IS A SERVICE ANIMAL?

A dog or a miniature horse that has been individually trained to do work or perform tasks for an individual with a disability. The task(s) performed by the dog or miniature horse must be directly related to the person's disability.



## WHAT IS A THERAPY ANIMAL?

A therapy animal, also referred to as comfort animal or emotional support animal, is a term used to describe an animal that provides comfort just by being with a person. The animal has not been trained to complete a specific job or task.

## INSTALLATION REGULATIONS

- Only Service Animals are recognized with policies outlined in MCO 1700.39
- Banned Breeds Include: Pitbull terriers, Rottweilers, Wolf hybrids, and other breeds with dominant aggressive traits.

\*Waivers may be requested for accredited service animals of banned breeds.

## PCSING WITH YOUR SERVICE ANIMAL

- Flights: Service animals may accompany you if certain criteria are met. For example, proper notification of travel; presenting documents, etc.
- Hotels: Allowed without extra cleaning fees unless damage occurs.

OCONUS Travel: check quarantine exemptions and verify airline and lodging requirements.

## KEY THINGS TO REMEMBER

Service animals must be harnessed, leashed, or tethered, unless it interferes with their tasks. Staff may ask **only the two following questions**: Is the animal required due to a disability and what task(s) has it been trained to perform.

This is a brief snapshot of our Family Training called "Service Animals vs Therapy Animals."  
To gain the entire training or for more information, please contact EFMP Camp Butler utilizing the information below.