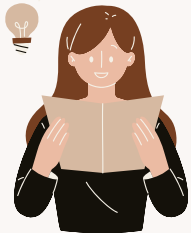


# Successful PCS Transitions

## FOR THE EFMP FAMILY



### **Step 1 (90 Days Before):**

- Family ensures paperwork is up to date
- Family Needs Assessment and Family Service Plan Conducted
- Family Case Worker (FCW) shares information with gaining installation FCW



### **Step 2 (30 Days Before):**

- FCW from gaining installation introduces themselves to the family



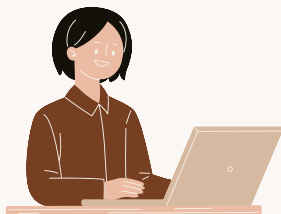
### **Step 3 (Departure):**

- Losing installation FCW alerts the gaining installation FCW that the family has departed



### **Step 4 (Arrival):**

- Family checks-in to the installation EFMP and their assigned FCW
- The EFMP case is transferred in the system
- FCW contacts the Marine and provides assistance as needed



### **Additional Helpful Resources:**

- Military OneSource - EFMP and Me, Plan my Move, Relocation Tool, Special Needs Moving
- Lincoln Military Housing
- Military Child Education Coalition
- Military Youth on the Move
- Book: Moving Day by Robert Kalan

This is a brief snapshot of our Family Training called "Successful PCS Transitions." To gain the entire training or for more information, please contact EFMP Camp Butler utilizing the information below.