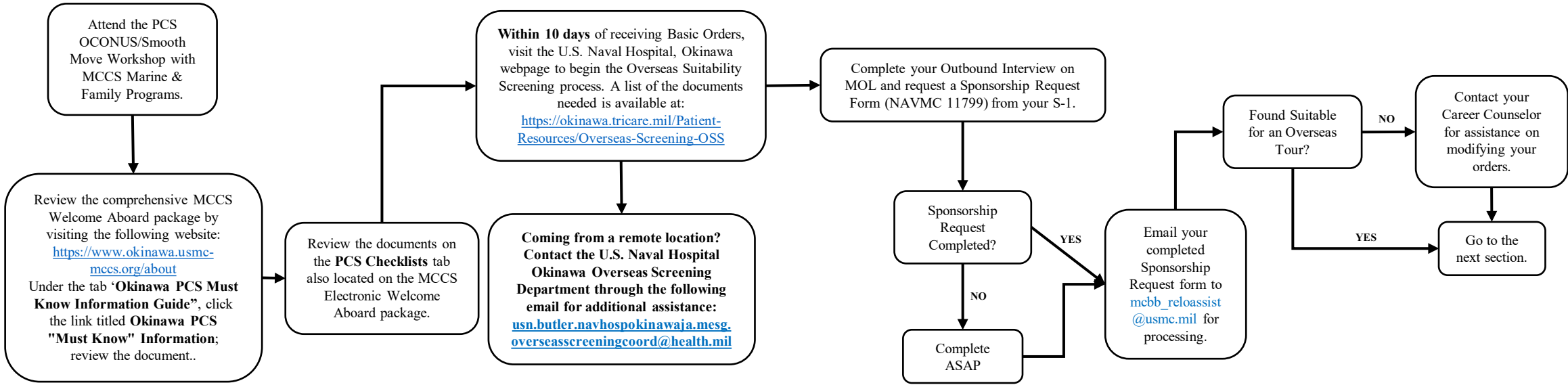


Once orders are received:

Topics Covered:

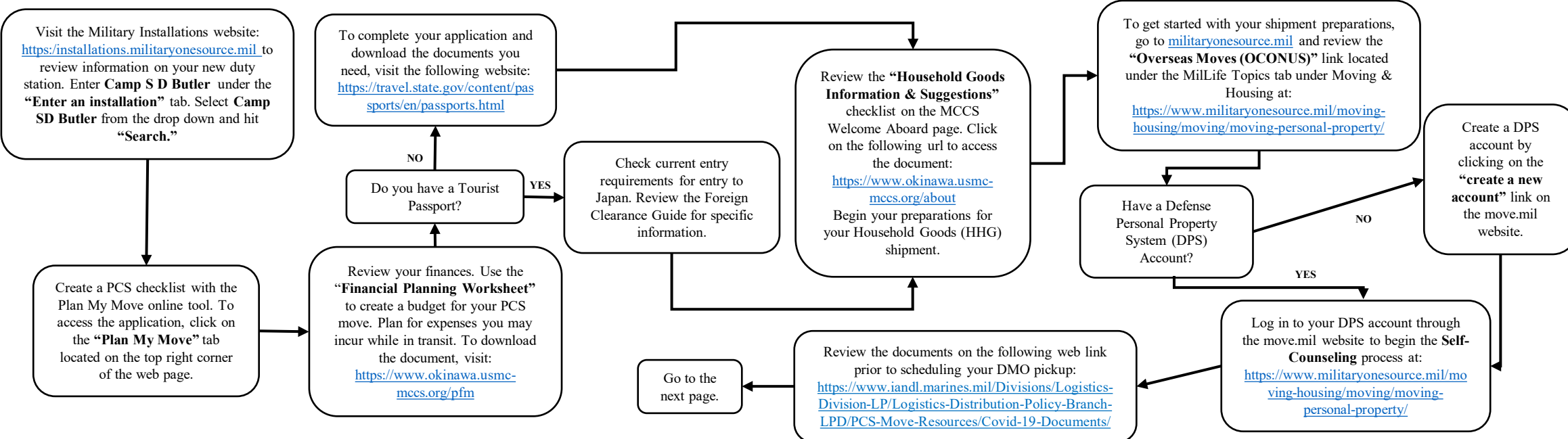
- ❖ Electronic Welcome Aboard Package
- ❖ Overseas Suitability Screening (OSS)
- ❖ Outbound Interview on MOL & Sponsorship Request Form



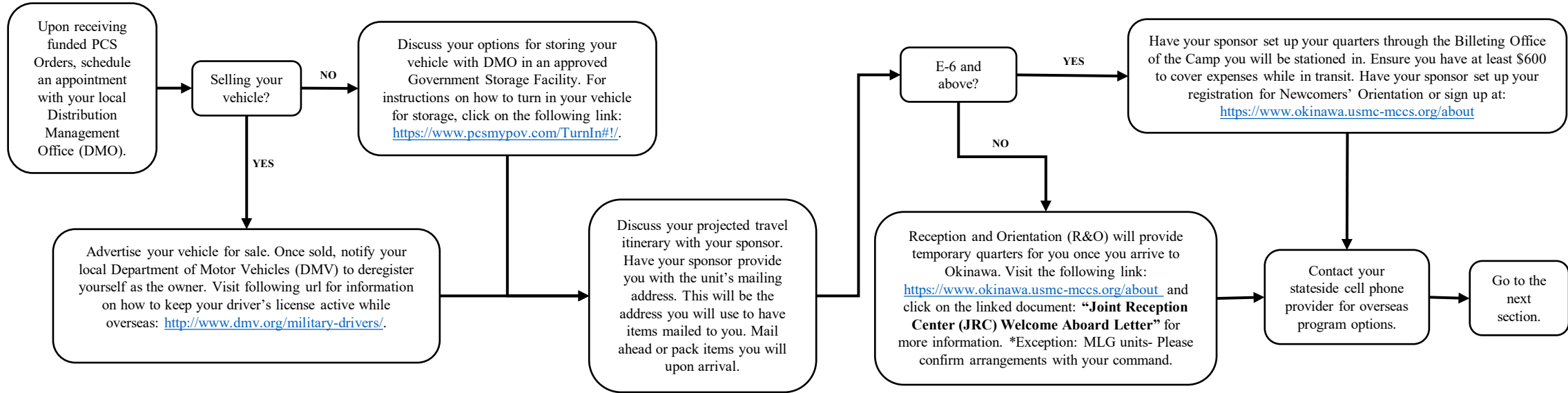
Three to Six Months:

Topics Covered:

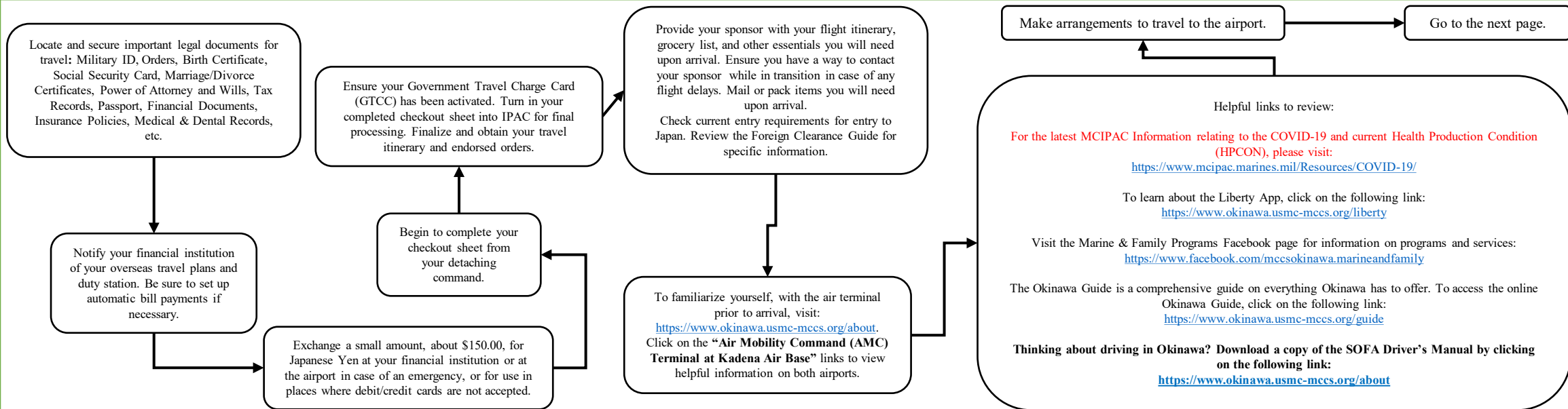
- ❖ Military Installations
- ❖ Plan My Move
- ❖ Financial Worksheet
- ❖ Passport
- ❖ Household Goods Shipment (HHG)



- One to Three Months:**
- Topics Covered:**
- ❖ Finalizing HHG Shipment
  - ❖ Storing Privately Owned Vehicle
  - ❖ Billeting Information
  - ❖ Reception and Orientation (RO)
  - ❖ Sponsor Responsibilities



- Less than Thirty Days:**
- Topics Covered:**
- ❖ Important Documents
  - ❖ Setting Up Finances
  - ❖ Checkout Process
  - ❖ Sponsor Notification
  - ❖ Travel and Arrival
  - ❖ Helpful Links



**Arrival:**

**Topics Covered:**

- ❖ Flying into Okinawa
- ❖ Transport to billeting
- ❖ Checking into Billeting or the Reception and Orientation (RO)
- ❖ Newcomers' Orientation Welcome Aboard
- ❖ SOFA Driver's License
- ❖ Check-In

